



# Aquatic Invasive Species Management

*A Panel Discussion*



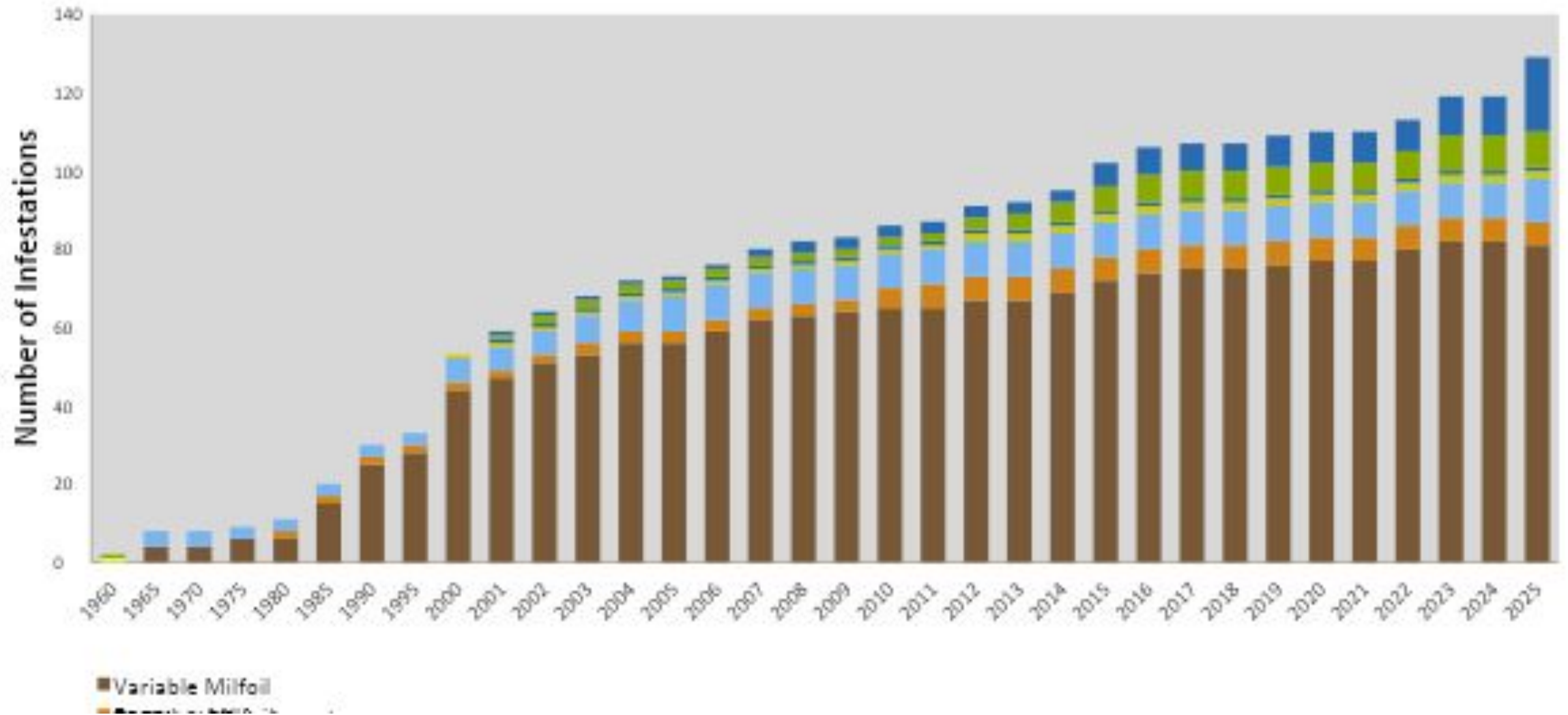
## Panelists

- Pauline Tessier, Silver Lake (Tilton/Belmont)
- David Gould, Lake Winnepesaukee (Alton)
- Neil Santos, Pawtuckaway Lake (Nottingham)
- Jeffrey Evans, Lake Pemigewasset (New Hampton/Meredith)

## Panel Moderators

- Georgia Bunnell, NHDES Exotic Species Program Coordinator
- Amy Smagula, NHDES Chief Aquatic Biologist & Director, Jody Connor  
Limnology Center

# Aquatic Invasive Species Infestations in New Hampshire



# Aquatic Invasive Species Infestations in New Hampshire

## Two new infestations in 2025:

- **Brittle naiad in Belleau Lake, Wakefield**



- **Spiny water flea in Newfound Lake, Bristol**



## Aquatic Invasive Species (AIS) Infestations in New Hampshire

Numbers correspond to [separate key](#) which lists waterbody name and town

### Legend

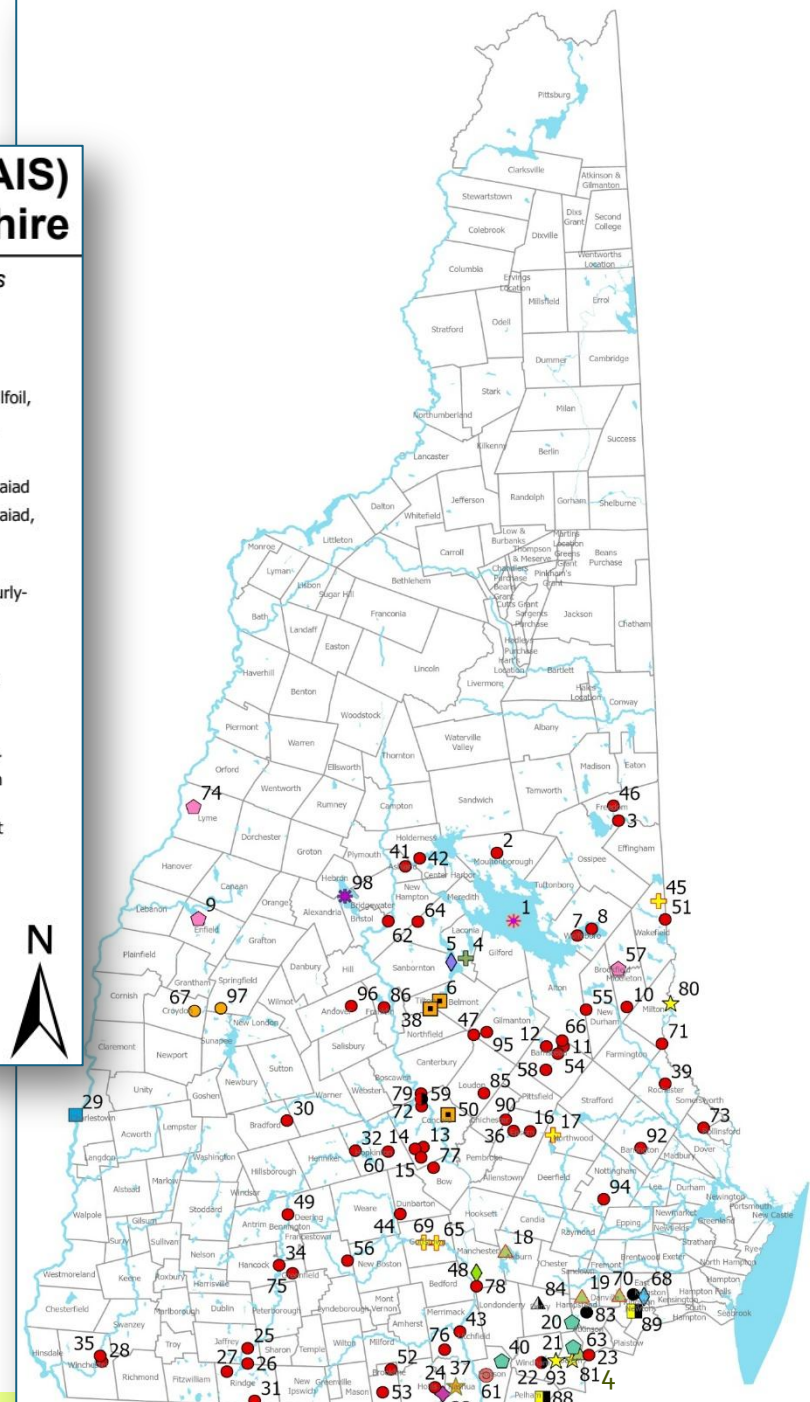
#### AIS Infestations

#### Type

- Asian clam
- Asian clam, European naiad
- ◆ Brazilian elodea
- Curly-leaf pondweed
- ◆ Eurasian milfoil
- Eurasian milfoil, European naiad, Didymo, curly-leaf pondweed, Water chestnut
- ★ European naiad
- ▲ Fanwort
- ✳ Spiny water flea
- Variable milfoil
- ◆ Variable milfoil, Water violet, Spiny water flea
- Variable milfoil, Asian clam
- ▲ Variable milfoil, Asian clam, European naiad
- Variable milfoil, Curly-leaf pondweed

- ◆ Variable milfoil, Eurasian milfoil, Fanwort, Water chestnut, European naiad, Curly-leaf pondweed
- ✳ Variable milfoil, European naiad
- ◆ Variable milfoil, European naiad, Waterwheel
- ▲ Variable milfoil, Fanwort
- Variable milfoil, Fanwort, Curly-leaf pondweed
- ★ Variable milfoil, Fanwort, Eurasian milfoil, Curly-leaf pondweed, European naiad
- ◆ Variable milfoil, Fanwort, European naiad
- ✳ Variable milfoil, Spiny water flea, Water violet, European naiad
- ✳ Variable milfoil, Water violet

- Town\_Boundaries
- Major\_Lakes
- Rivers



## Format for the Session

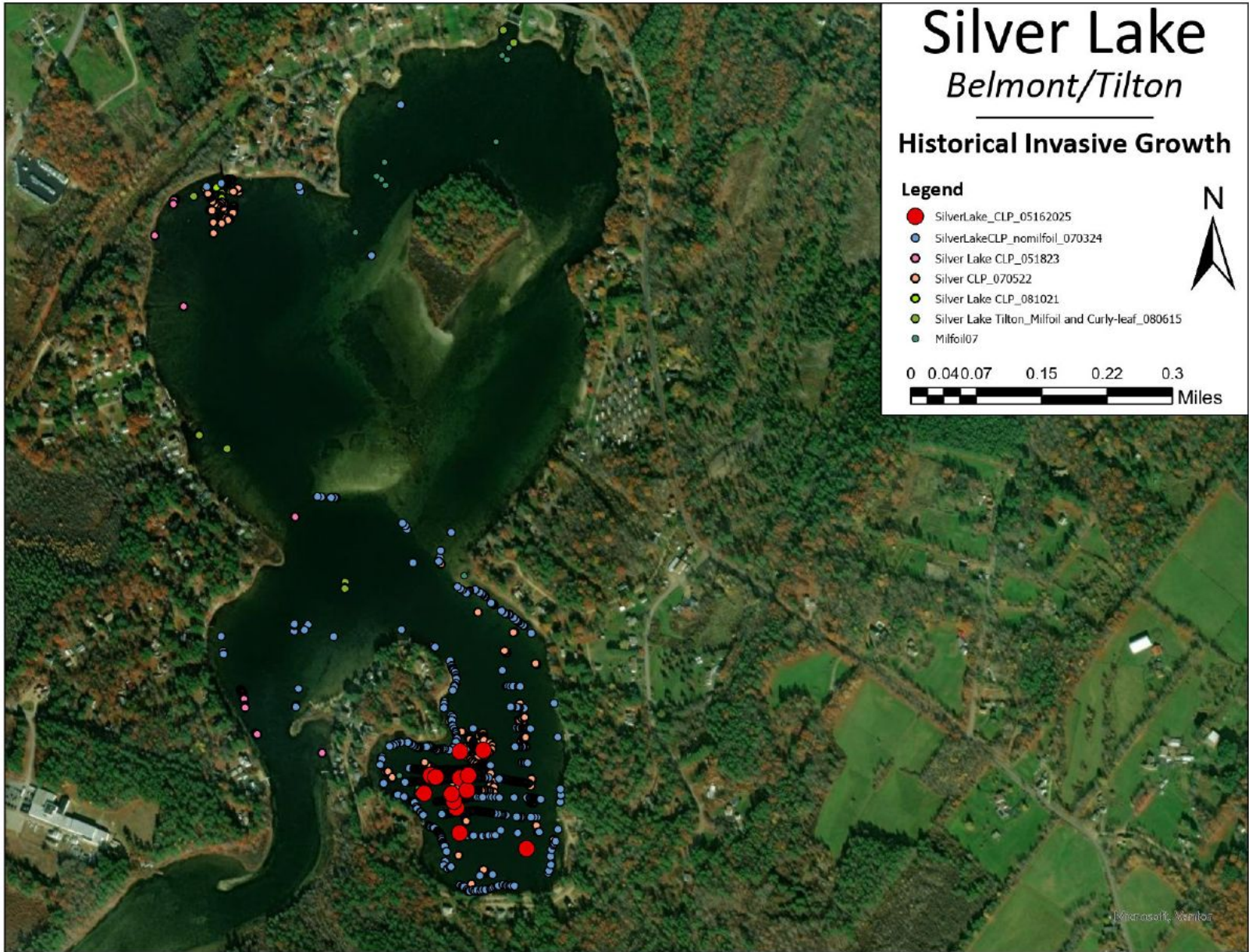
Panel Moderators will take turns posing questions to our panelists, who represent four AIS infested waterbodies in NH

Each panelist will respond to questions posed to them with information about their own experience at their lake

We will try to reserve time for questions at the end!

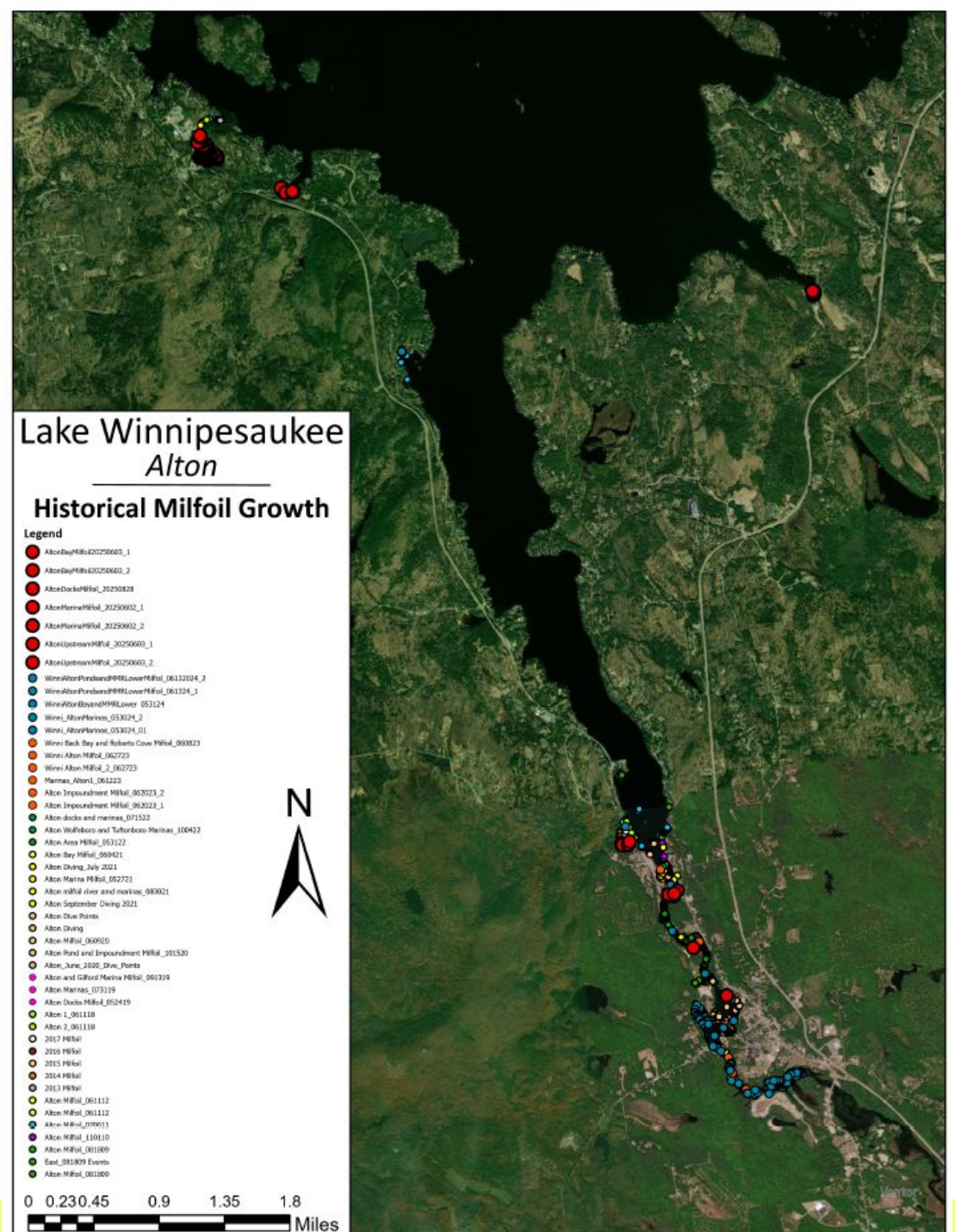
# Question 1

Please provide an overview of your lake's exotic aquatic species problems, including species, how widespread the problem is, and how long you have been dealing with it?

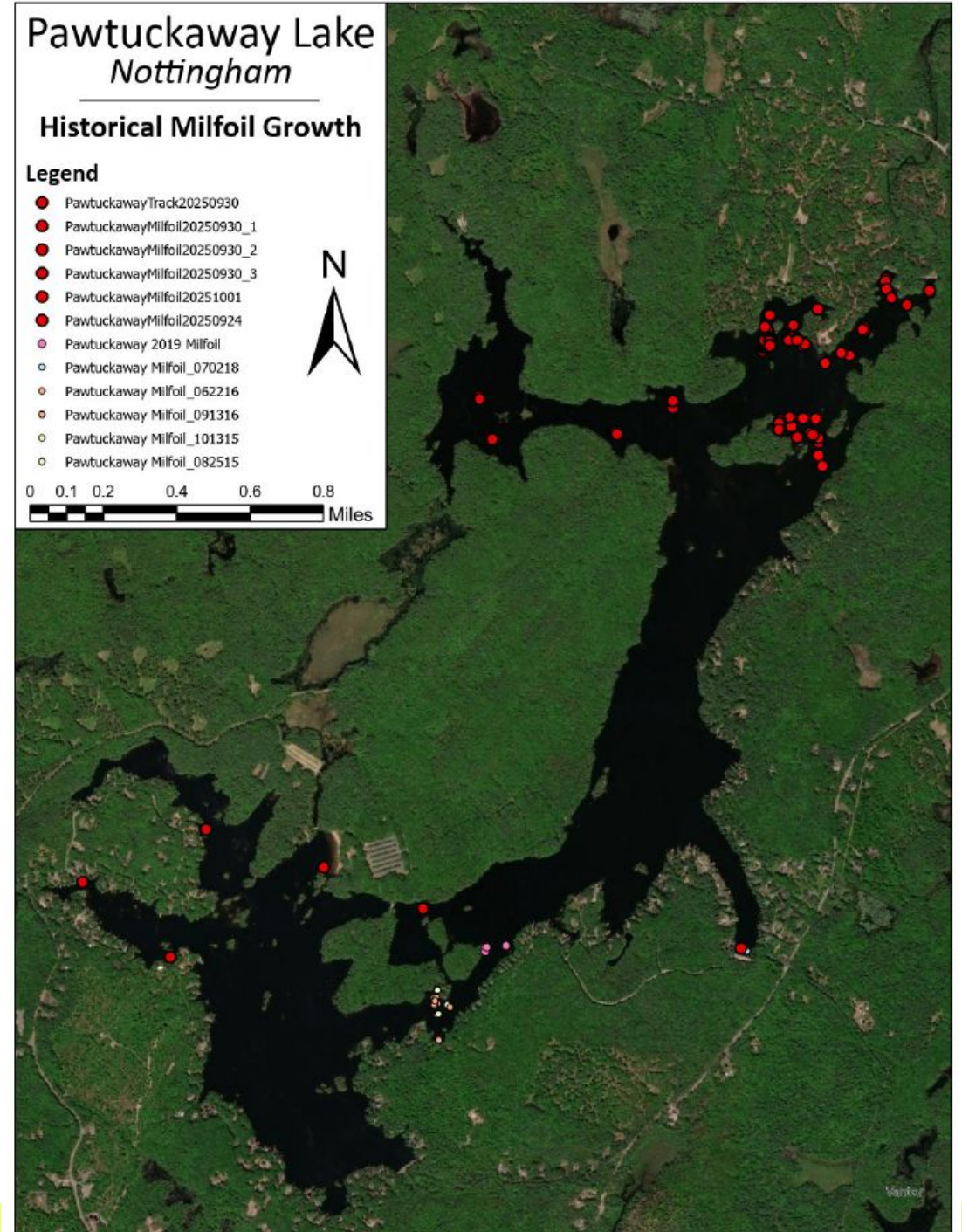


# Silver Lake Milfoil and Curly-leaf Pondweed

# Alton Milfoil Over Time



# Pawtuckaway Milfoil Over Time



# Pemigewasset Lake

*Meredith/New Hampton*

## Historical Milfoil Growth

### Legend

- PemiMilfoil20250826\_3
- PemiMilfoil20250826\_1
- PemiMilfoil20250826\_2
- PemiLakeVolunteerSurvey070525
- PemiLakeMilfoil20250626\_1
- PemiLakeMilfoil20250626\_2
- PemiLakeMilfoil\_053124
- Pemi Lake Milfoil
- Pemi Lake Milfoil\_090210
- Pemi\_Lake\_2009\_Milfoil



# Lake Pemigewasset Milfoil

## Question 2

How is your group structured? Is it your lake association, the town, a combination of both, or some other lead entity who coordinates for the lake? And where does funding come from?

## Question 3

What types of management have you done over the years?

# Control Actions by Waterbody

Control Action	Silver Lake	Winnepesaukee (Alton)	Pawtuckaway	Pemigewasset
Herbicide	X	X	X	?
Diving/DASH	X	X	X	X
Benthic Barrier				



## DASH Boat in Alton

## Question 4

How effective has the management been? Has the infestation decreased over time?

## Question 5

What have been some of the biggest challenges you have faced when it comes to exotic species in your lake?

## Question 6

What do you think has worked really well, and what do you think could be improved on locally, on the state level, or anywhere in the process for exotic species management?

## Question 7

What are your words of wisdom to other groups across the state, when it comes to exotic aquatic species?



Questions?