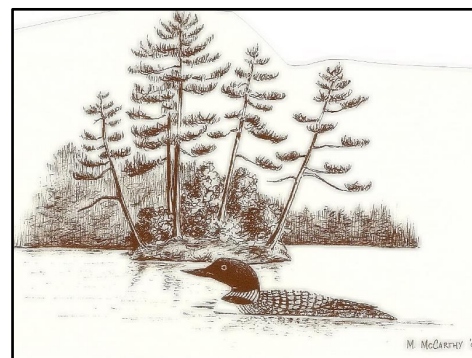




Jon Balanoff
Executive Director

Acton Wakefield Watersheds Alliance

Pine River Pond Boat Launch Project



Boat Launch

16

Belleau Lake

Province Lake Rd

Pine River Pond Rd

Ballards Ridge Rd

Round Pond

White Mountain Hwy

East W

153

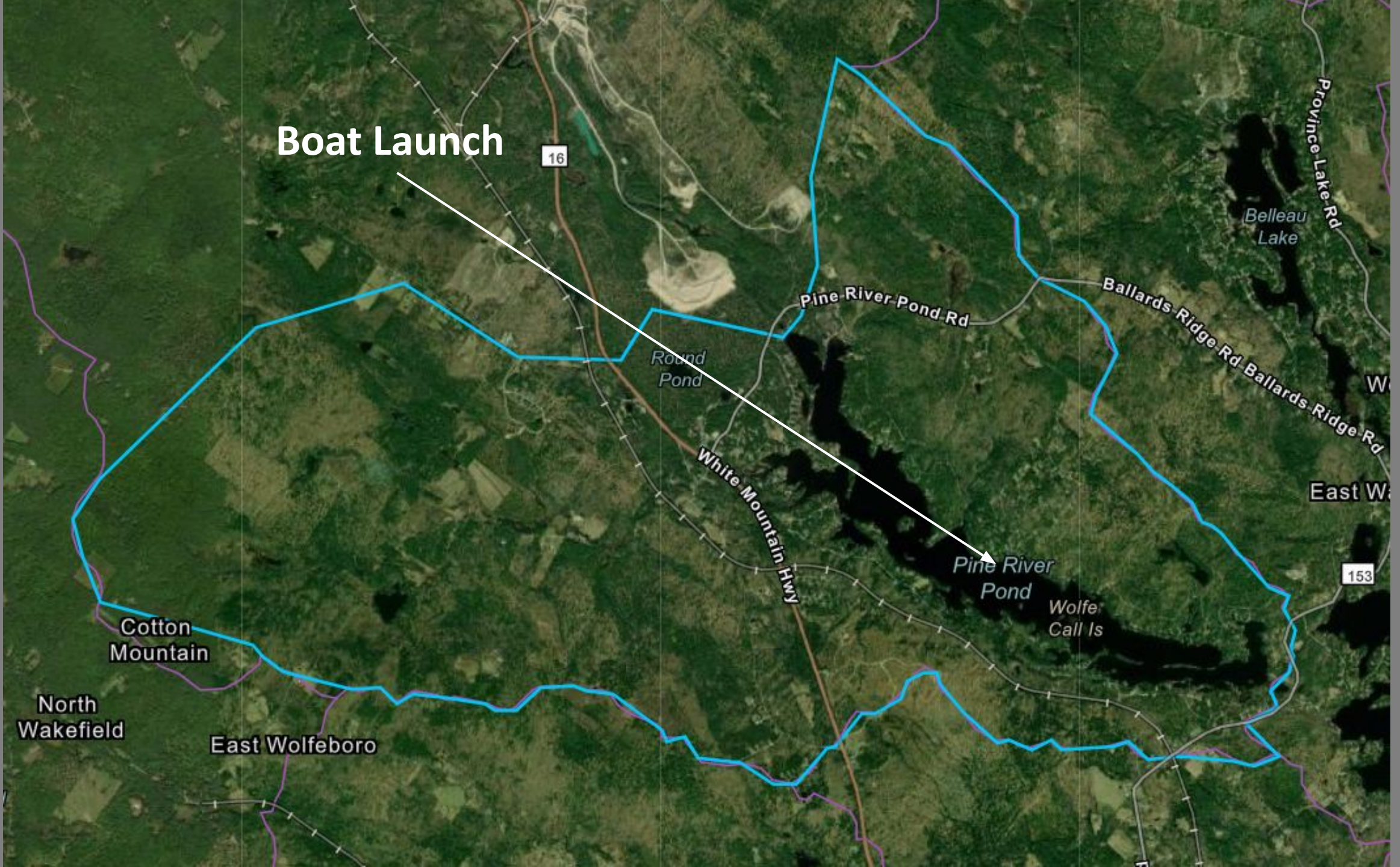
Pine River Pond

Wolfe
Call Is

Cotton Mountain

North Wakefield

East Wolfeboro





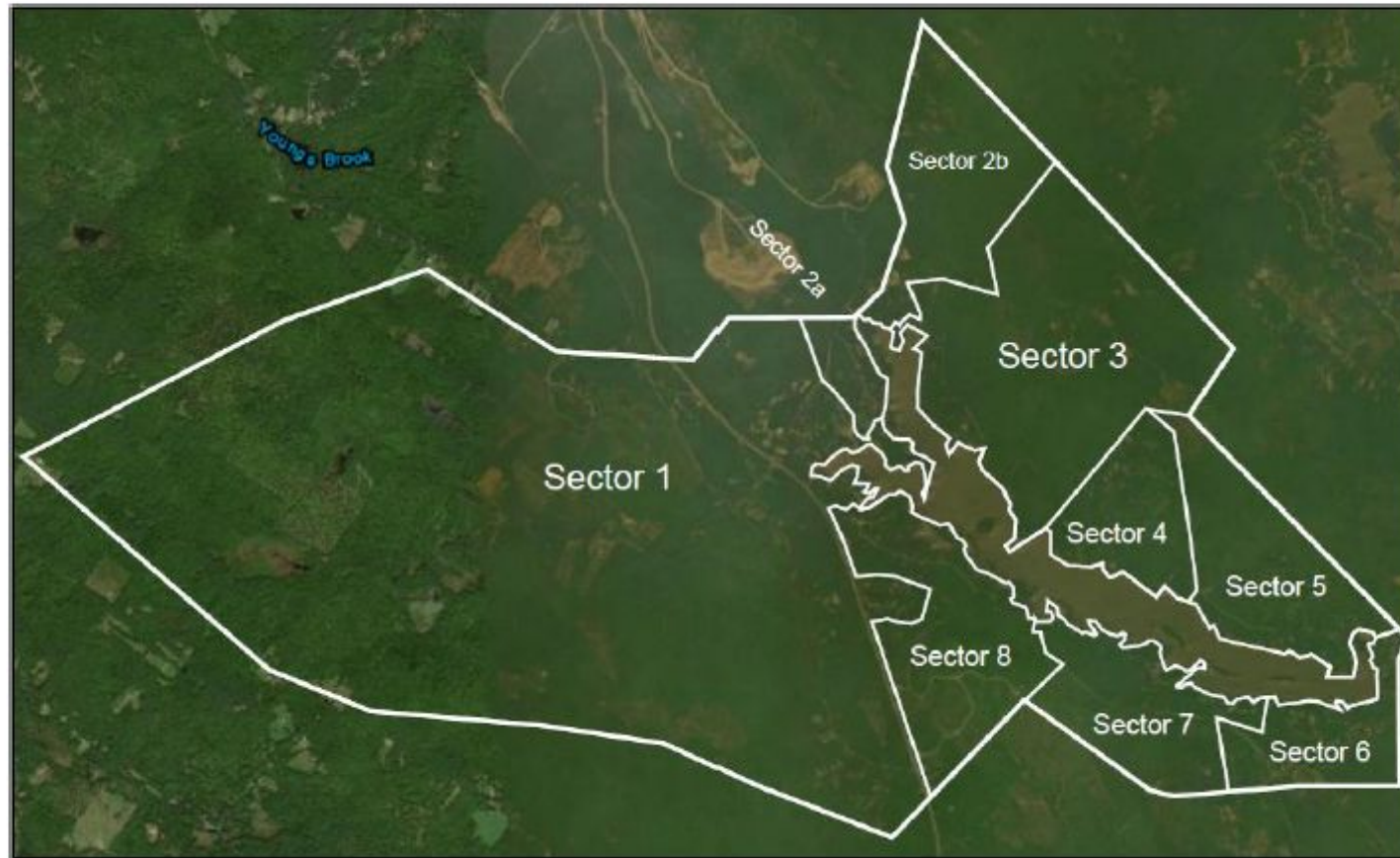




Pine River Pond Watershed Survey

May 7th, 2021

Sector 1







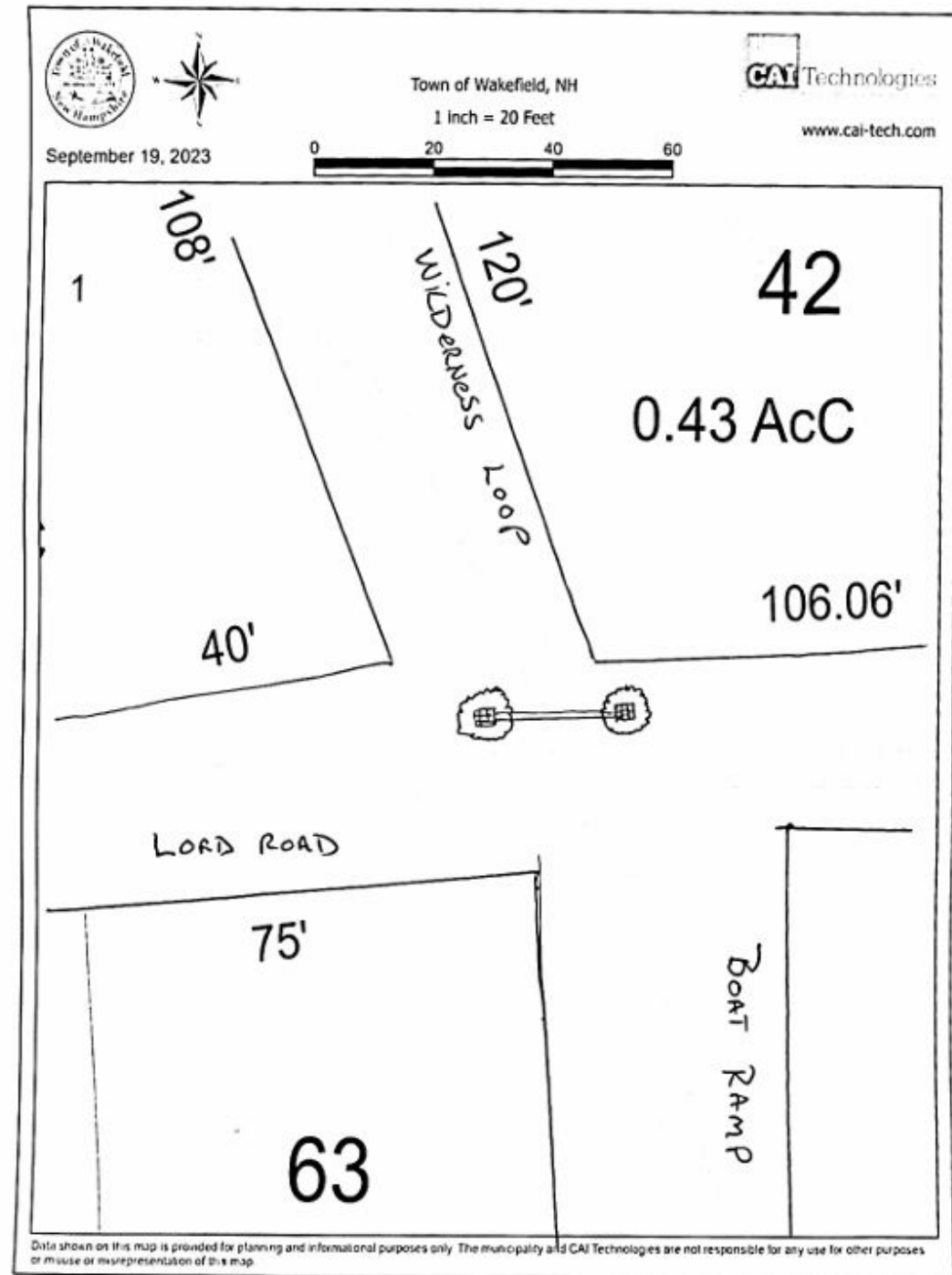
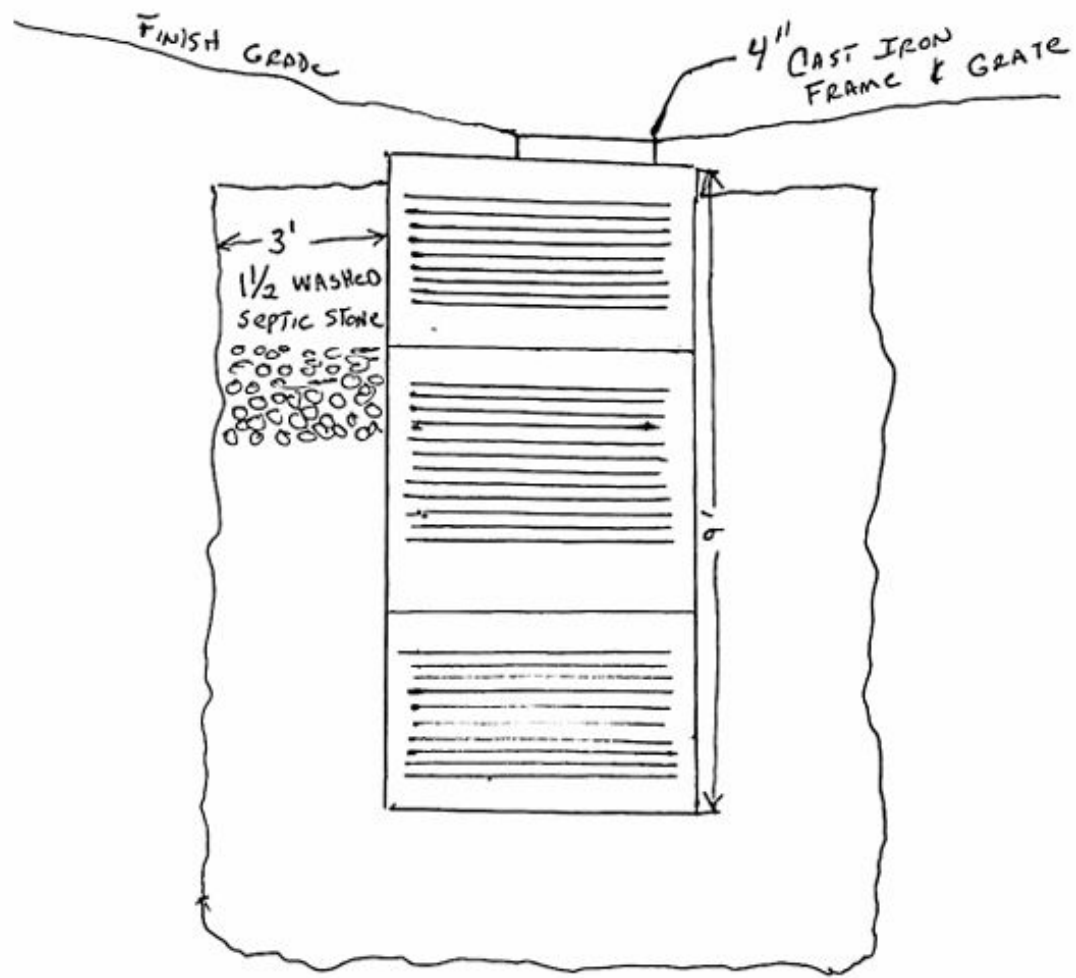


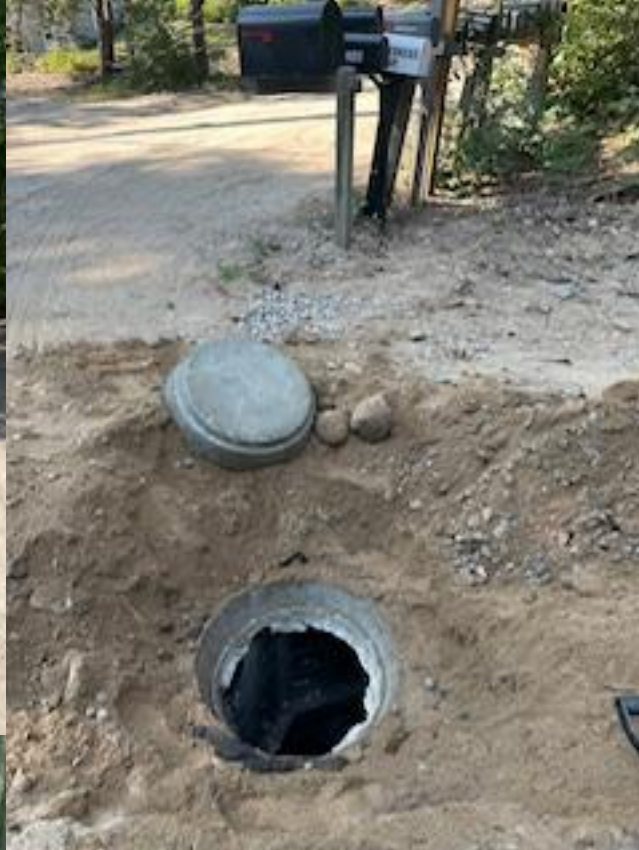






6'-6" DIAMETER SOAKER
w/ 3' OF 1 1/2" WASHED SEPTIC STONE





PAVE

6'-6" DIAMETER SOAKER
w/ 3' OF 1 1/2" WASHED SEPTIC STONE

FINISH GRADE

4" CAST IRON
FRAME & GRATE

3'
1 1/2" WASHED
SEPTIC STONE

6'



Town of Wakefield, NH

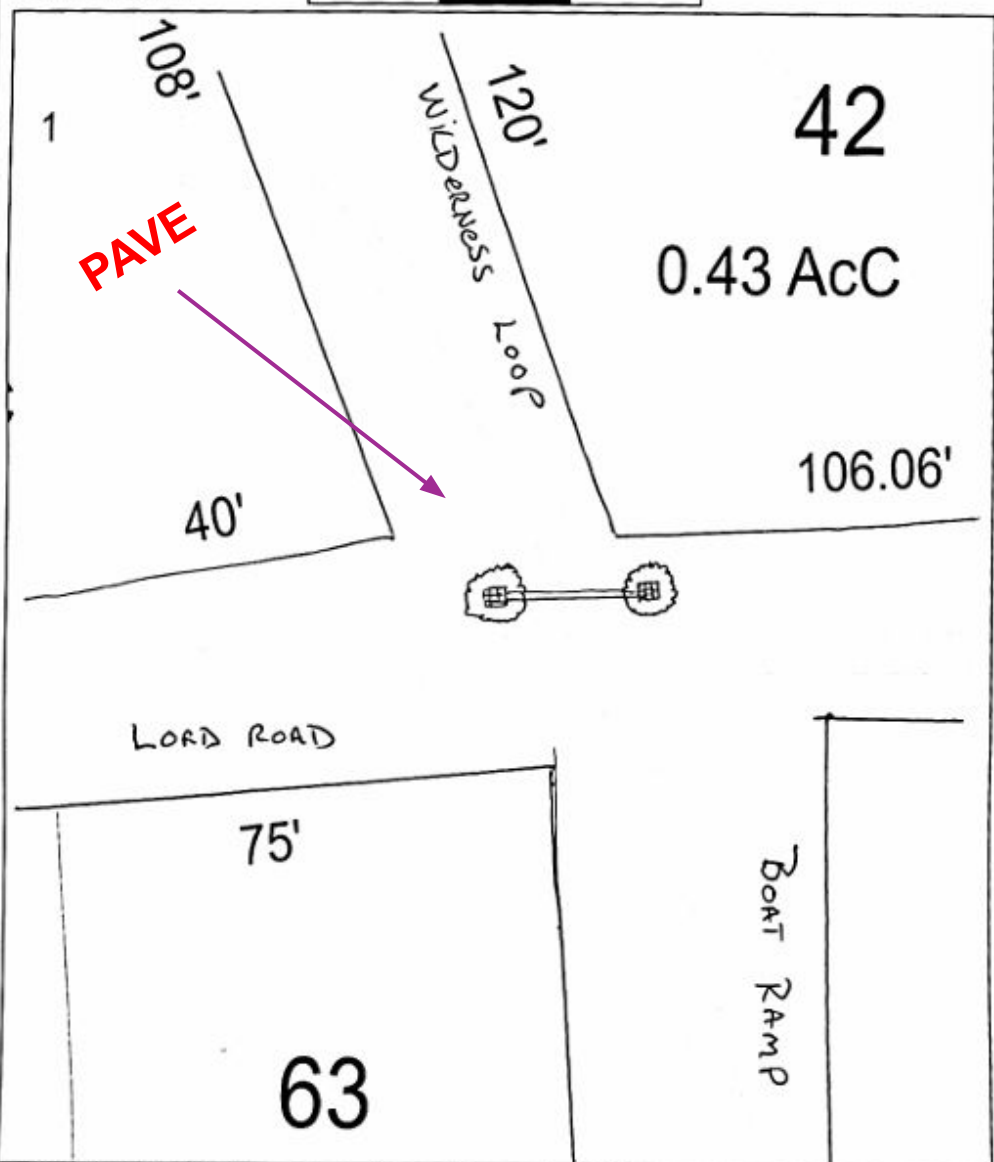
1 Inch = 20 Feet

September 19, 2023



CAI Technologies

www.cai-tech.com



Data shown on this map is provided for planning and informational purposes only. The municipality and CAI Technologies are not responsible for any use for other purposes or misuse or misrepresentation of this map.



Show Your Support

Amount	Preserve Pine River Pond Gift
\$50	1 Preserve Pine River Pond boat sticker
\$100	2 Preserve Pine River Pond boat stickers – one for your car and one for your boat
\$250	Garden Flag
\$500	Boat Flag
\$1000	Large flag OR all the above
\$3000	All the above and your name on the boat ramp sign

Donate Online or by Check



Donations can be accepted online by the Acton-Wakefield Watersheds Alliance at <https://awwatersheds.org/donate/>

- 1 Select Pine River Pond as your lake affiliation
- 1 Insert your donation amount



We will email you to arrange delivery of your gift.

If you prefer to write a check, please make it out to AWWA and mail to: P.O. Box 235, Union, NH 03887

Any questions regarding this collaborative effort can be directed to Jon Balanoff, Director of AWWA – he can be reached at 603-473-2500 or jbalanoff@awwatersheds.org

Thank you for your support as we work together to **Preserve Pine River Pond!**















Jon Balanoff, Executive Director
jbalanoff@awwatersheds.org
603-473-2500

Partners:

Pine River Pond Association

Pine River Association

Lord Road Association

Acton Wakefield

Watersheds Alliance

NHDES



From Here to Here in 16 Months...



4/2/2023

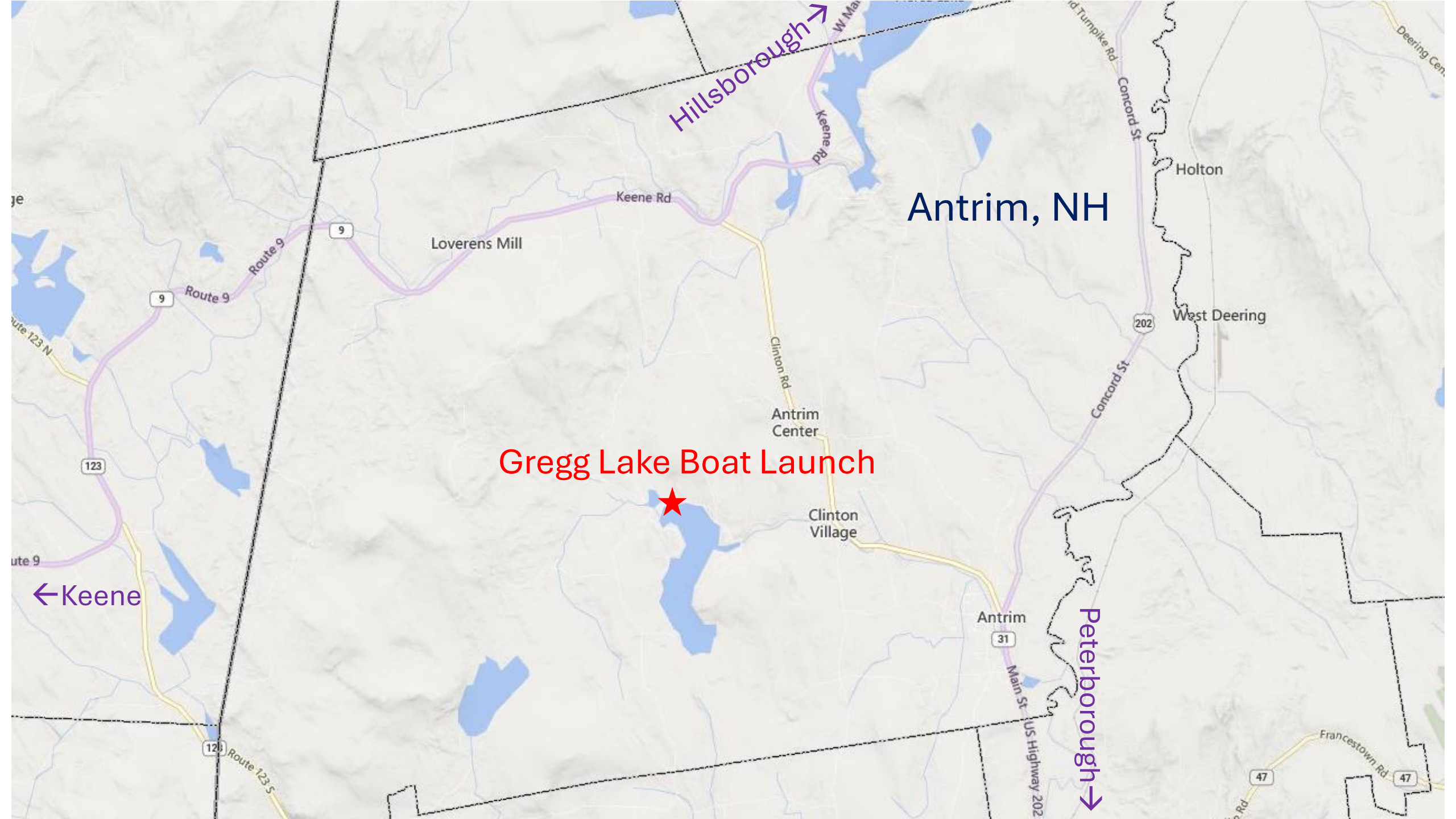
Celeste Lunetta
Antrim Recreation Director

Joan Gorga
Antrim Parks and Recreation
Commission



How the small town of Antrim mobilized GOFERR pandemic relief funding to upgrade its public boat launch





Hillsborough →

Antrim, NH

Gregg Lake Boat Launch



← Keene

Peterborough →

Antrim was prepared!

History of planning:

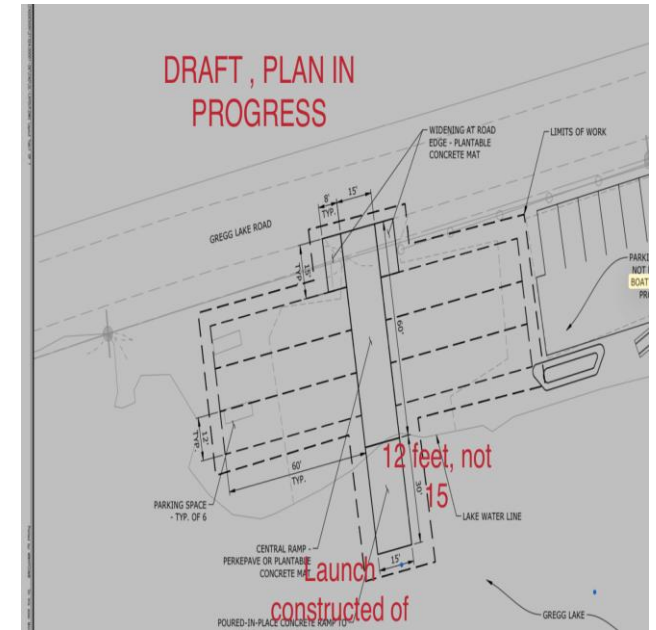
2015 Concern over algal growth

2020 Completed GL Watershed Management Plan

- Beach and boat launch major nutrient sources
- **Conceptual engineering plans for boat launch**

2021 LWCF grant for beach park improvements

- Consulted with NHFG & NH Parks re boat launch
- Boat launch project more than 5 years out, not included



Gregg Lake Beach Park, Antrim, NH


11/9/2021





Google Earth Images from August 2023:
Perceptions and memories , change is hard.



A photograph of three otters swimming in a body of water. The otters are positioned in a line, with the one on the left slightly ahead of the other two. They are all looking directly at the camera. The water is dark blue with some ripples. The background is a soft, out-of-focus blue.

What's going on over there?

Communication & Teamwork

Boat Launch Improvements

Spring 2023 Advised of available grant funding

- Representative→Selectboard→PARC
- GOFERR funding for boat launches
- 70/30 split
- Deadline rapidly approaching
- Project completion by July 2024

Added to Shoreland Permitting application

Visited 20+ boat launches in NH, VT, MA

Budget—Max \$100,000(?)

- Central ramp
- Parking spaces
- Landscaping for erosion control



Antrim's success: Collaboration

Antrim Selectboard

Antrim Parks & Recreation Commission

Antrim Highway

Scheduling

Funding

Antrim Conservation Commission

Antrim Planning Board

Gregg Lake Association

Lake Residents/Users

Volunteers

Beach Staff

Local contractors



Stormwater Erosion and Shoreline Recession



Gregg Lake WMP

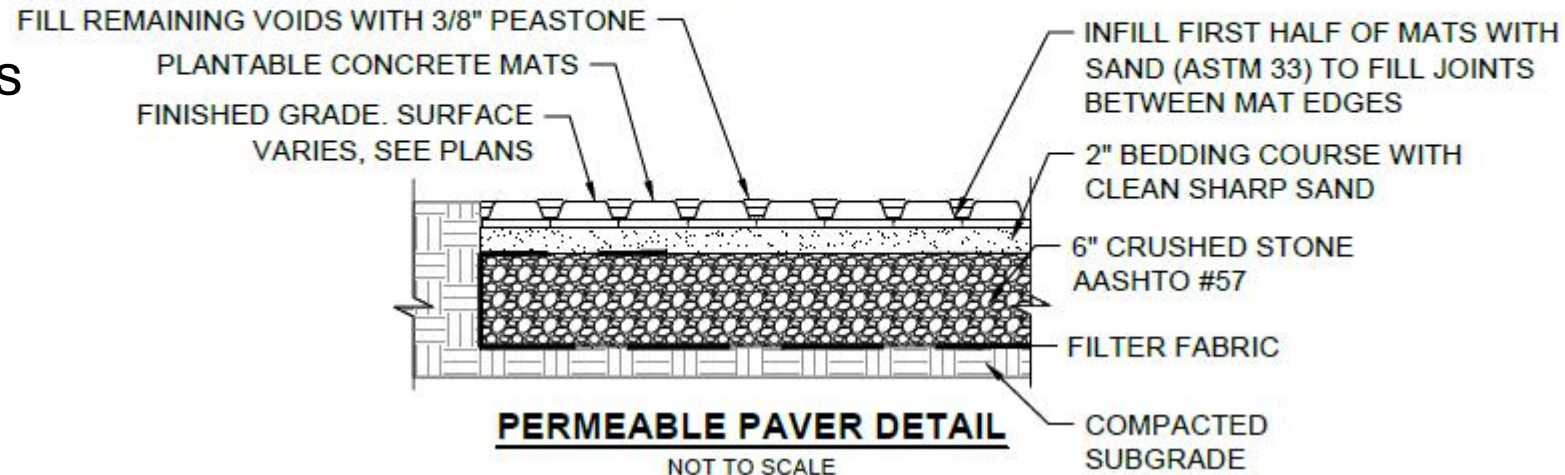
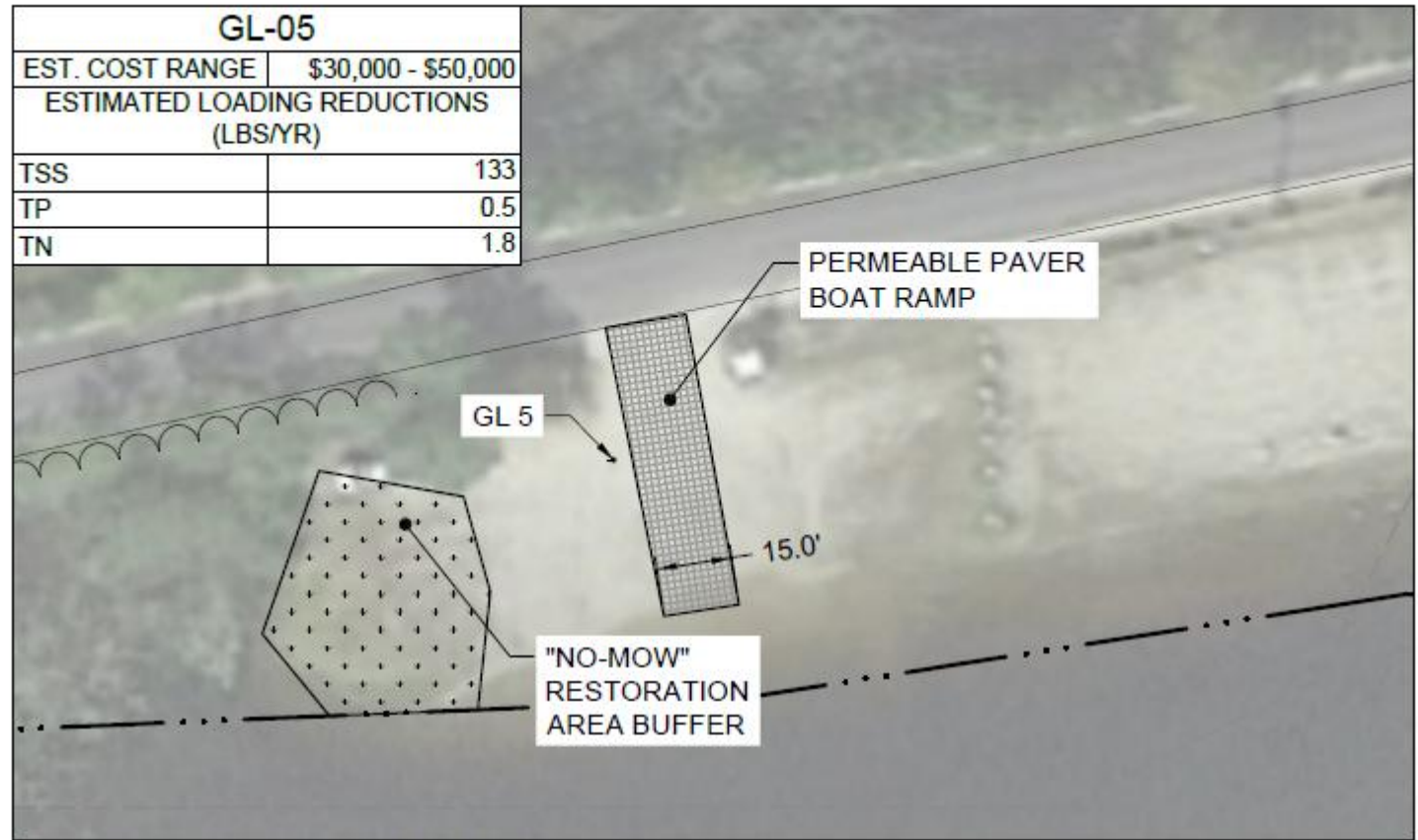
Boat launch major source of nutrients affecting water quality

- Suspended sediments
- Total phosphorus
- Total nitrogen

10% Conceptual engineering design for stabilizing boat launch

Recommended permeable pavers

- Drivable Grass®
- Turfstone™



Drivable Grass[®]

- 2" x 2" Concrete squares in 2' x 2' mats
- 1½" Thick concrete
- Area 40% concrete; 60% plantable





7/15/2024











**Native
Perennials**



Helen's Flower
Helenium autumnale

Bloom : Fall
4'Tall x 3'Wide
Soil: Moist
Zones: 3-8
Full Sun





Aug 13, 2024





8/26/2024



8/29/2024

A Challenge to establishing the grass in our pavers, and protecting the Rain Garden Plants:



Canada Goose Yelp Review August 2024:

★★★★★ Food is fresh, gourmet seed, the servers are entertaining with their flapping arms and shouting. Five stars! Will be back!

Goose Yelp Review Spring 2025: ★ one star! Service is hostile. Not a family friendly environment. Felt unwelcome. Food is still excellent.



Antrim's Gregg Lake Boat Launch Improvements

4/2/2023



3/18/2025



Have a wonderful summer season!
Back to the panel for Q&A!



Funding

Show me the money!



Need to get creative!

- Review grant program priorities
- Think about co-occurring needs – stormwater, recreational access, water quality, etc.
- Fit needs to grant programs and priorities – tailor your applications
- Be persistent!



Funding Program	Description	For more information
Land & Water Conservation Fund NH Department of Natural and Cultural Resources	Administered by NH Department of Natural and Cultural Resources; grants for development and acquisition of recreational facilities and areas.	NH State Parks - Land and Water Conservation Fund Grant
Watershed Assistance Grants NHDES	Annual grant program with funding to implement projects described in watershed plans.	Watershed Assistance Grants NH Department of Environmental Services
Moose Plate Grants State Conservation Committee Grant Program	Annual funding for water quality, conservation, and habitat projects	Moose Plate Grant Program NH State Library
Clean Water State Revolving Fund NHDES	Loans for water quality projects (planning and implementation)	Clean Water State Revolving Fund NH Department of Environmental Services
New Hampshire Charitable Foundation	Multiple grant categories, including funding for environmental projects.	https://www.nhcf.org/

Invitation at Dawn

*Darkness slips
from the trees as
small bass jostle for flies
just past where our casts fall
near the dock
where we sit*

*From across the water
comes a sound
softly at first then
growing louder
the lake calls to us
arise
now is your moment
this is your time*

~ PAH

Questions?

Sally Soule
sally.a.soule@des.nh.gov

