



Creating a New “Norm” of Lake-Friendly Living on Your Lake

Presented by:
Krystal Costa Balanoff, Conservation Program Manager, NH LAKES
Bree Rossiter, Conservation Program Manager, Lake Winnepesaukee Association

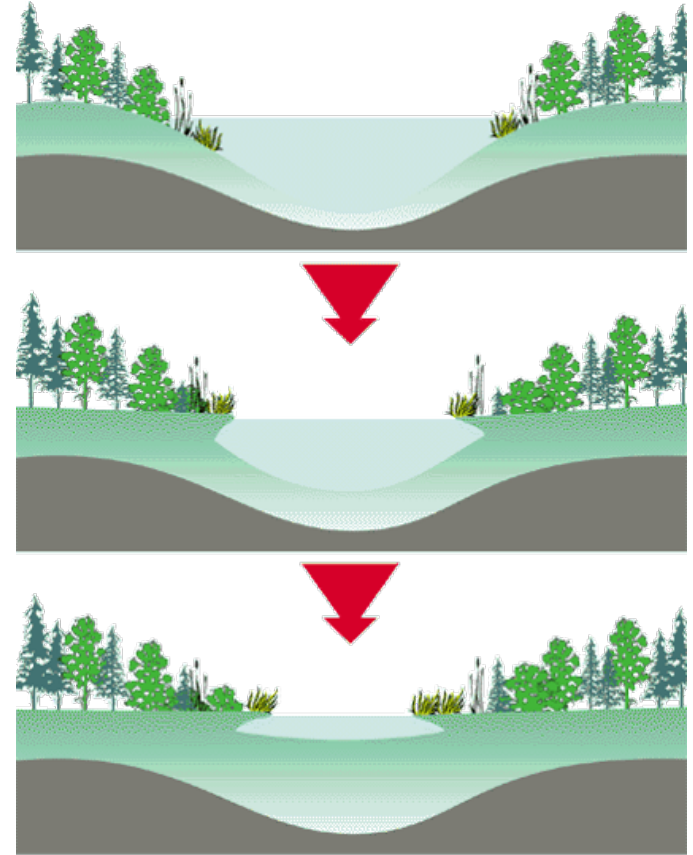


We're are the voice for all of New Hampshire's 1,000 lakes.



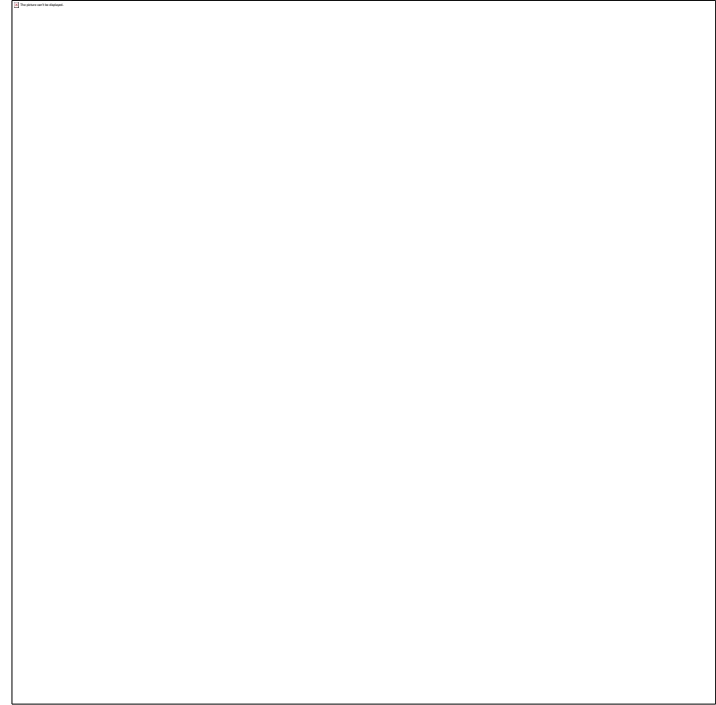
Lakes, like people, age over time.

They fill in with decayed plants, algae, and sediment.





Human activities speed up the aging process.



Changing land use, changing weather patterns...



...it is no wonder our lakes are suffering.



In 2019, NH LAKES
launched the LakeSmart
Lake-Friendly Living
Program.

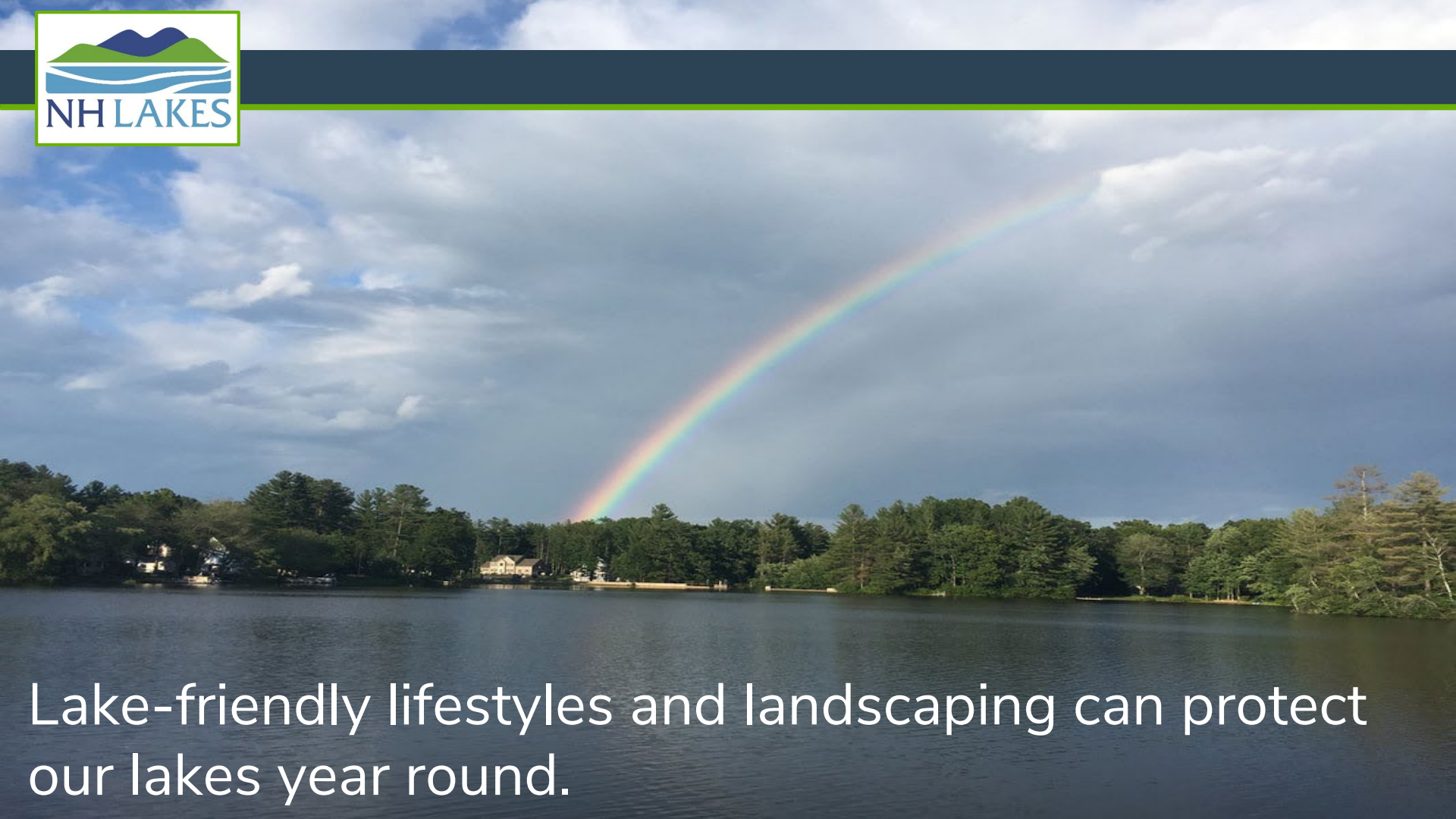




What is lake-friendly living?



It is living in a way that minimizes your
contribution to lake aging.



Lake-friendly lifestyles and landscaping can protect our lakes year round.



Everyone truly cares about the lake and wants to do their part to keep it clean and healthy.





Yes, everyone!





Pillars of LakeSmart:

- Education
- Progress
- Recognition
- Trust





Most importantly,
LakeSmart is:

- Free
- Voluntary
- Non-regulatory

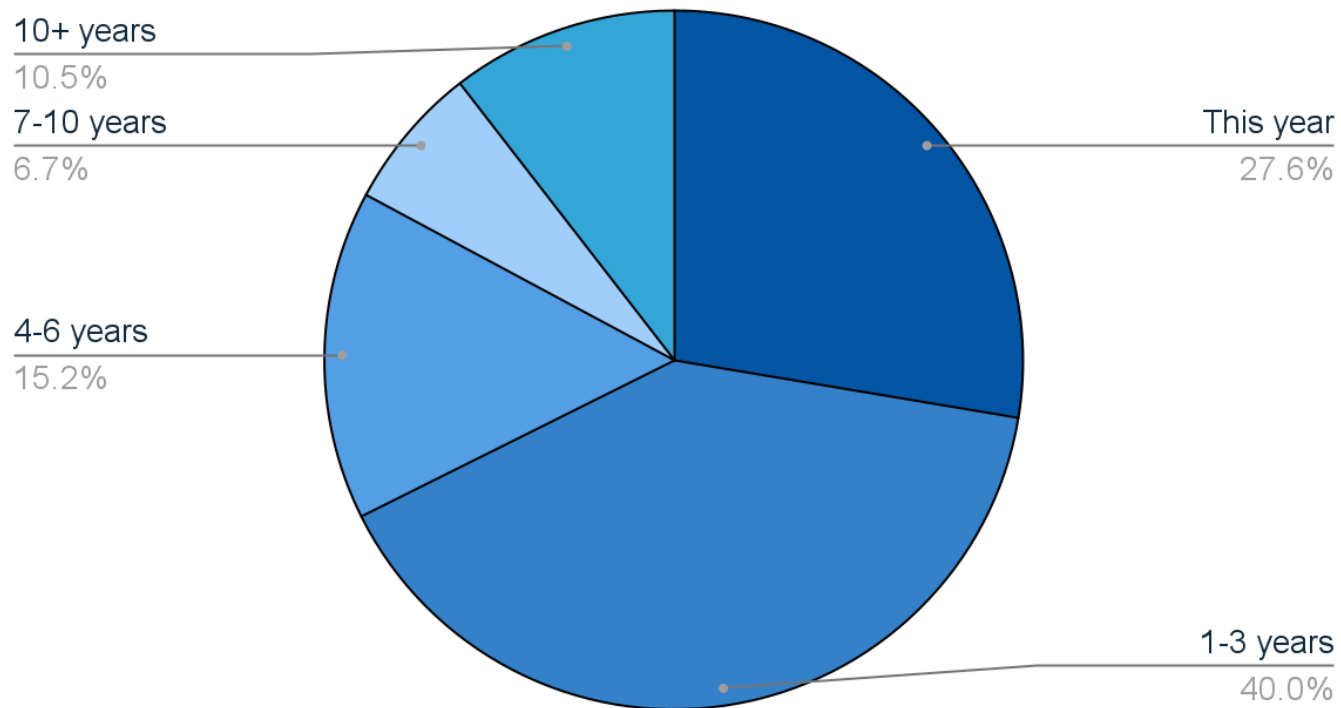




You can take steps to small steps to protect the lake.



Self-Reported Time Since Last Septic Inspection





Embracing native lake weeds.



Allowing a sandy beach to rewild.



Embracing a natural lawn.





Converting lawn to a wildflower meadow.



Pruning for your view.



Stabilizing parking surfaces.



Diverting heavy runoff.





Armoring steep slopes.



Detering geese!





Mulching exposed soil and tree roots.



Retiring the leaf blower.



Utilizing boat storage.



Stabilizing dripline areas.





You can lead the way.



Learning by doing!



Volunteering to go first.

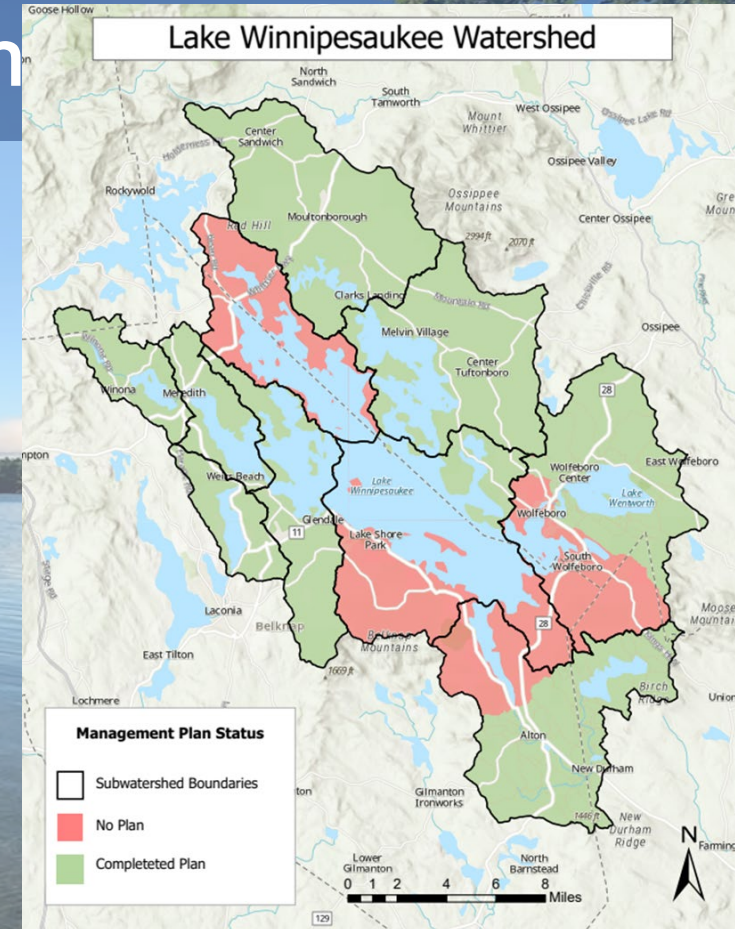
Lake Winnepesaukee Association

Keep Winni Blue



Watershed Management Plan

- Delineate and map subwatersheds
- Analyze existing water quality data
- Inventory of mitigation sites
- Estimate pollutant loads
- Shoreline and watershed surveys
- Education and outreach
- Action Plan



Shoreline Surveys

Categories

- Buffer
- Bare Soil
- Shoreline Erosion
- Setback Distance
- Slope

+2,000 Shoreline Surveys Completed



Be Winni Blue & LakeSmart Program

- Free, voluntary, non-regulatory
- Simple, cost effective recommendations
- Categories
 - Driveway and Parking
 - Structures and Septic
 - Yard and Recreation Areas
 - Shoreline and Water Access



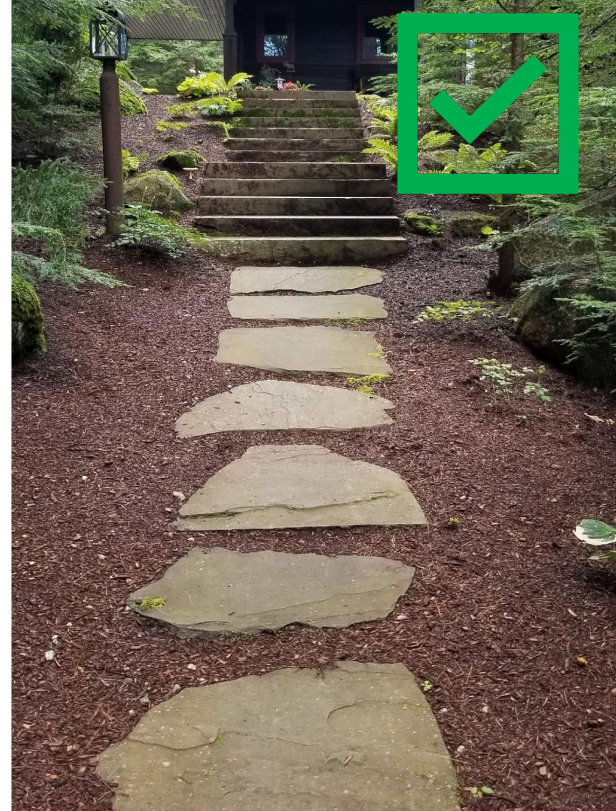
Driveway and Parking Areas



Structures and Septic Systems




Yard, Recreation and Footpaths




Phosphate Free Fertilizer Campaign

Participating Retailers

- Alton Home & Garden Center
- Alton True Value & Country Supply
- Aubuchon Hardware (Alton)
- Aubuchon Hardware (Meredith)
- Aubuchon Hardware (Moultonborough)
- Bradley's Hardware (Wolfeboro)
- E.M. Heath Hardware (Center Harbor)
- Gilford True Value Hardware
- Heath's Ace Hardware (Laconia)
- Moulton Farm (Meredith)
- Osborne's Agway Winnisquam (Belmont)
- Spider Web Gardens (Tuftonboro)
- Tractor Supply Co. (Gilford)



LAKE WINNIPESAUKEE
ASSOCIATION
Keep Winni Blue



Buying Fertilizer?

16-0-8

LOOK FOR THE
ZERO IN THE
MIDDLE

HELP KEEP
WINNI BLUE
AND BUY
PHOSPHATE
FREE

"Most NH Soils provide all the phosphorus that a home lawn needs."

Cathy Neal, from "New Hampshire's Turf Fertilizer Law - What You Should Know", University of New Hampshire Extension, 2018.

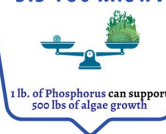
What is Phosphorus?

Phosphorus is a naturally occurring element found in the air, soil, and plants. These sources contain very small amounts of phosphorus.

Increased concentrations of phosphorus in our waterbodies **are due to human activity** and may result in:

- Increased algal and cyanobacteria blooms
- A decline in swimming, fishing and boating
- Increased growth of variable milfoil

DID YOU KNOW?



OPEN CAMERA AND SCAN CODE

Handy Tips for Landscaping
on the Shorefront



How to Test Your Soil
Before Fertilizing



How Much Fertilizer Do
You Need?

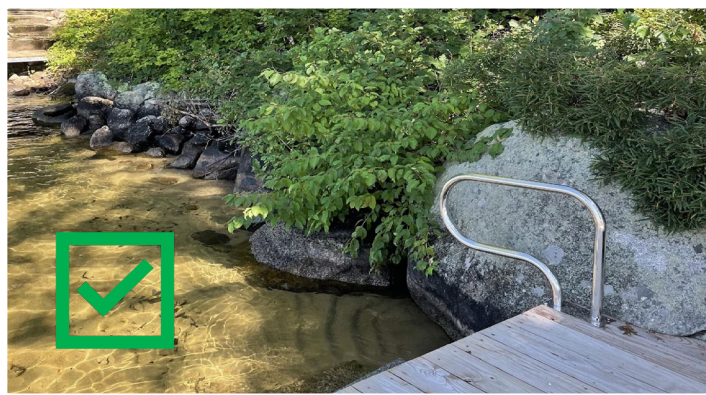


PO Box 1624, Meredith, NH 03253
+1 (603) 581-4652
www.winnepesaukee.org
mail@winnepesaukee.org



64 Court St. Laconia, NH 03246
+1 (603) 527-5475
https://extension.unh.edu
ce.be@unh.edu

Shoreline and Water Access



How YOU Can Help

1. Sign Up for a Be Winni Blue & LakeSmart Site Visit
 - a. <https://nhlakes.org/lakesmart/>
2. Take these easy actions to reduce your phosphorus footprint
 - a. **Use Phosphate-Free cleaning products**
 - b. **Plant native shrubs to increase your vegetated buffer**
 - c. **Consider letting part of your lawn “Go Wild!”**
3. Spread the word! Talk to family, friends and neighbors
4. Become a member of LWA and NH LAKES



Contact Information

Krystal Costa Balanoff
Conservation Program Manager
NH LAKES

kcosta@nhlakes.org
(603) 226-0299



Bree Rossiter
Conservation Program Manager
Lake Winnepesaukee Association

brossiter@winnepesaukee.org
(603) 591-6632



LAKE WINNIPESAUKEE
ASSOCIATION
Keep Winni Blue

Join us at 1pm (Waterfront Tent) **Lake-Friendly Landscaping Workshop**