

Lake-Friendly Landscapes

How to Get the Landscape You'll Love & Protect Our Lakes



LAKE WINNIPESAUKEE
ASSOCIATION
Keep Winni Blue



Lake-Friendly Landscapes Are:

- Mindful of Runoff and Erosion
- Healthy & Resilient
- Sustainable



Being Mindful of Runoff and Erosion

Designing Your Landscape

Evaluate your needs are before building, and use creative design to achieve them.

- What is your lifestyle?
- How much lawn space will you actually use?
- What do you value?
- How frequently do you entertain?



Being Mindful of Runoff and Erosion

Designing Your Landscape

- Avoid “Hardscape Runways” leading to the water. Instead, have pathways meander, use stepping stones, and allow for permeable areas within hardscapes.



Being Mindful of Runoff and Erosion

Designing Your Landscape

- On sloping lots, tiered construction can increase usable space and deter damaging runoff.



Being Mindful of Runoff and Erosion

Designing Your Landscape

- Have a plan to manage water. Drainage into a rain garden, dry stream bed, or installing a swale can make a big difference.



Being Mindful of Runoff and Erosion

Designing Your Landscape

- Carefully planned and managed vegetative barriers & preserving the natural duff layer are an excellent step to lake-friendly landscaping



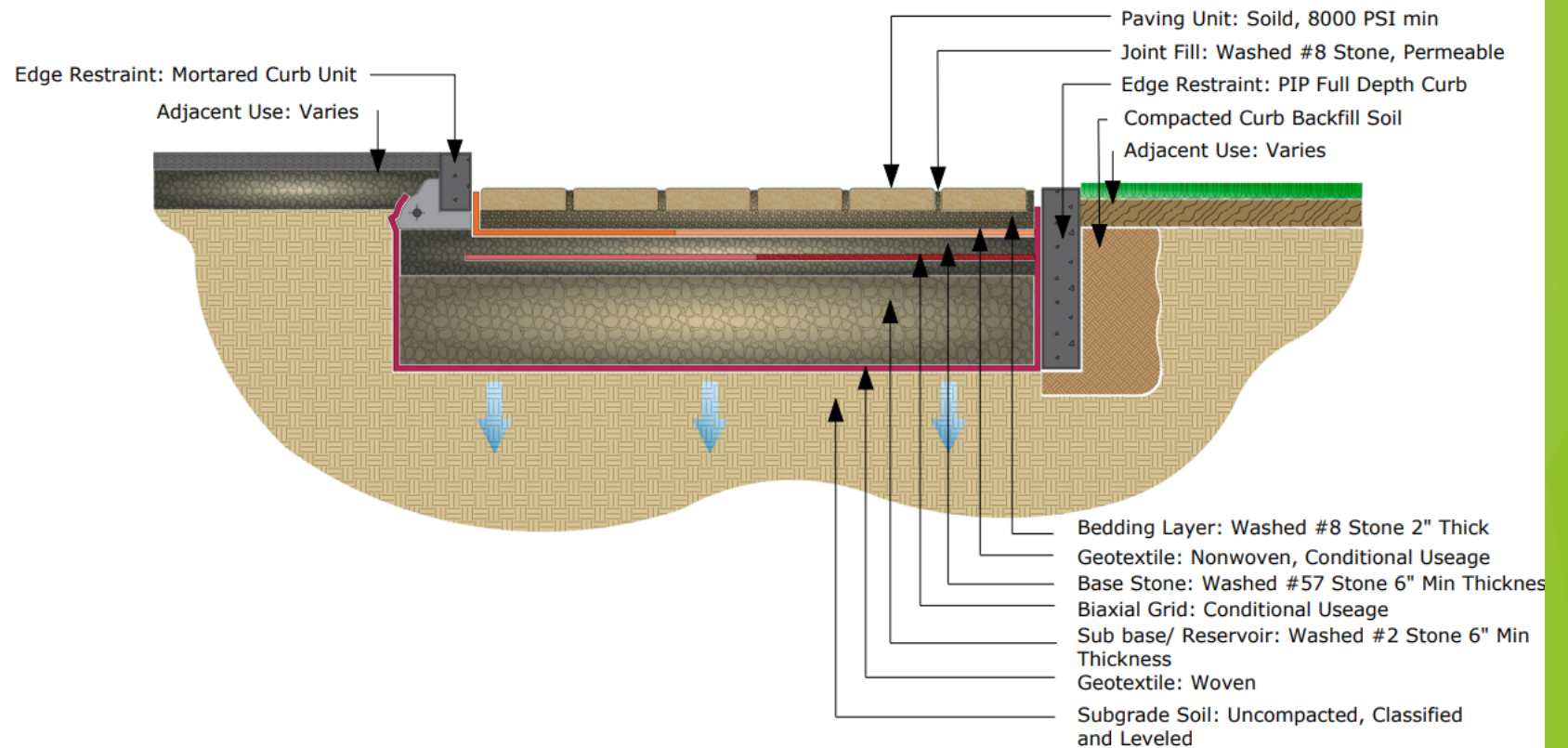
Being Mindful of Runoff and Erosion

Permeable Hardscapes

- Utilize hardscape techniques that are permeable. The preparation of substrate, joint spacing and materials are unique in permeable applications.

Techo-Bloc Permea Paving System

-Full Infiltration Condition-

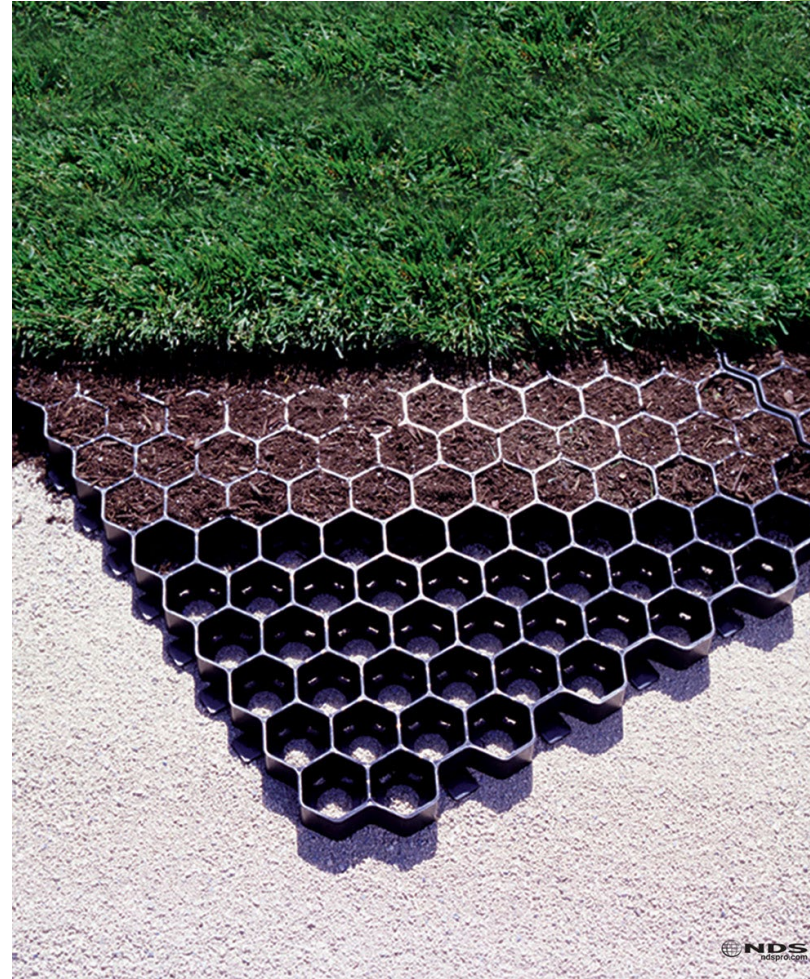


Techo-Bloc

Being Mindful of Runoff and Erosion

“Grassy Pavers”

- Grassy Pavers are another great permeable option
- They can create durable, green entertaining spaces
- They are designed as a stabilizing measure for the soil structure, virtually eliminating erosion



Being Mindful of Runoff and Erosion

Utilize Existing Trees and Plants

- Trees and plants are exceptionally important to protecting the lake
- Existing trees and plants can be pruned to be more appealing, and allow views
- These specific specimens have exhibited they are able to survive and thrive on your property.
- Mature plants and trees provide an aesthetic that is difficult to be replicated



Being Mindful of Runoff and Erosion

Utilize Native Trees and Plants

- Native species typically require less care to be viable on your property, reducing the need for chemicals assistance
- They provide similar benefits to other species, while also complementing the surrounding environment



Being Mindful of Runoff and Erosion

Use of Planters

- Planters are an excellent way to add ornamental color and texture
- They are self-contained, produce no runoff, and can be easy to maintain compared to alternative options



Being Mindful of Runoff and Erosion During Construction

- Any time a landscape project is undertaken on your property which may lead to runoff or erosion concerns, you should use preventative measures



Healthy and Resilient Landscapes

The importance of plants

- Healthy Landscapes combat erosion and runoff through robust root systems and creating physical barriers
- Resilient plants require less care, water, fertilizer, and they are robust against damaging winds, cold, and animals



Healthy and Resilient Landscapes

Caring for Trees

Check for missing foliage and damaged or sagging limbs annually



Is there evidence of a pest infestation?



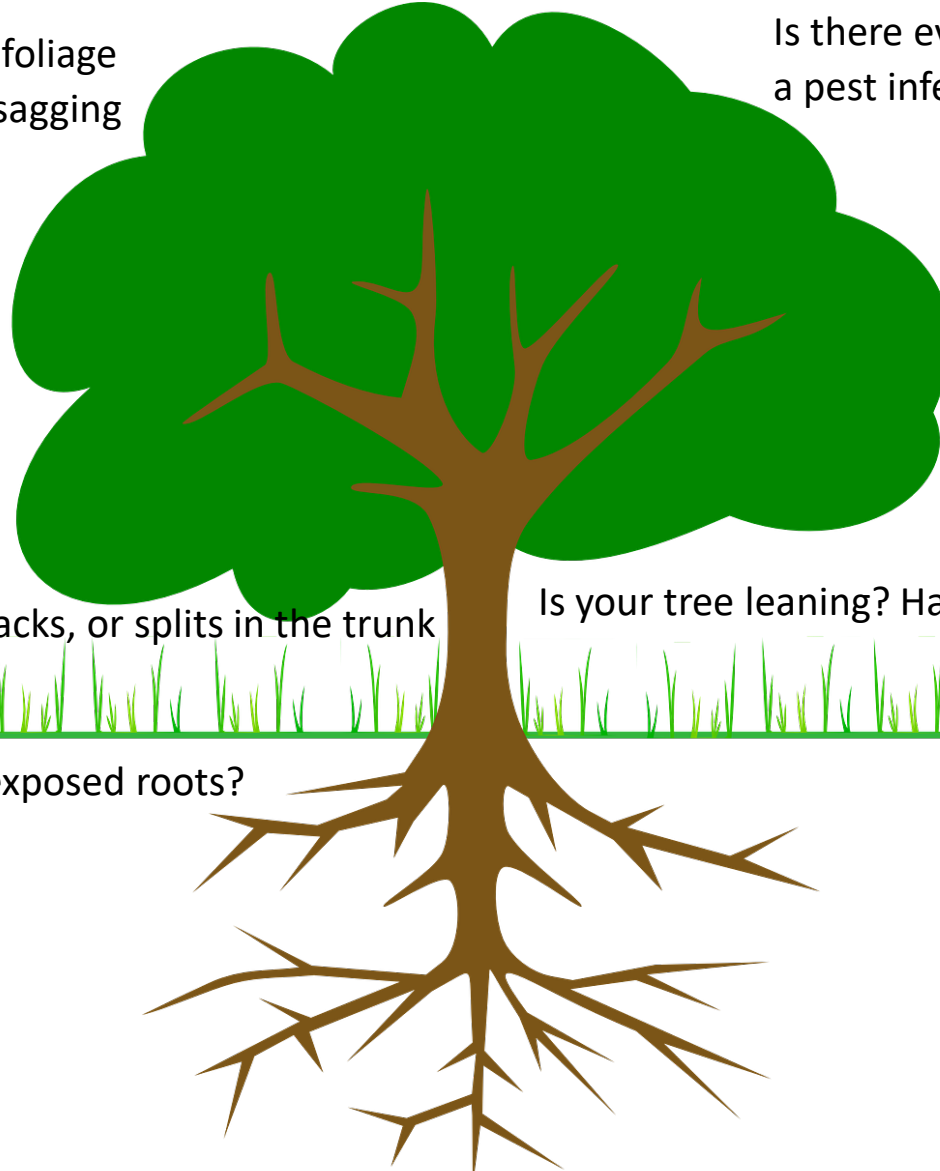
Look for areas of discoloration, fungal growth, and mold



Check for damage, cracks, or splits in the trunk

Is your tree leaning? Has an existing lean become more pronounced?

Are there damaged or exposed roots?



If you see evidence of tree damage, pest or disease concerns, or hazardous conditions, contact an ISA Certified Arborist



Healthy and Resilient Landscapes

Monitoring for health

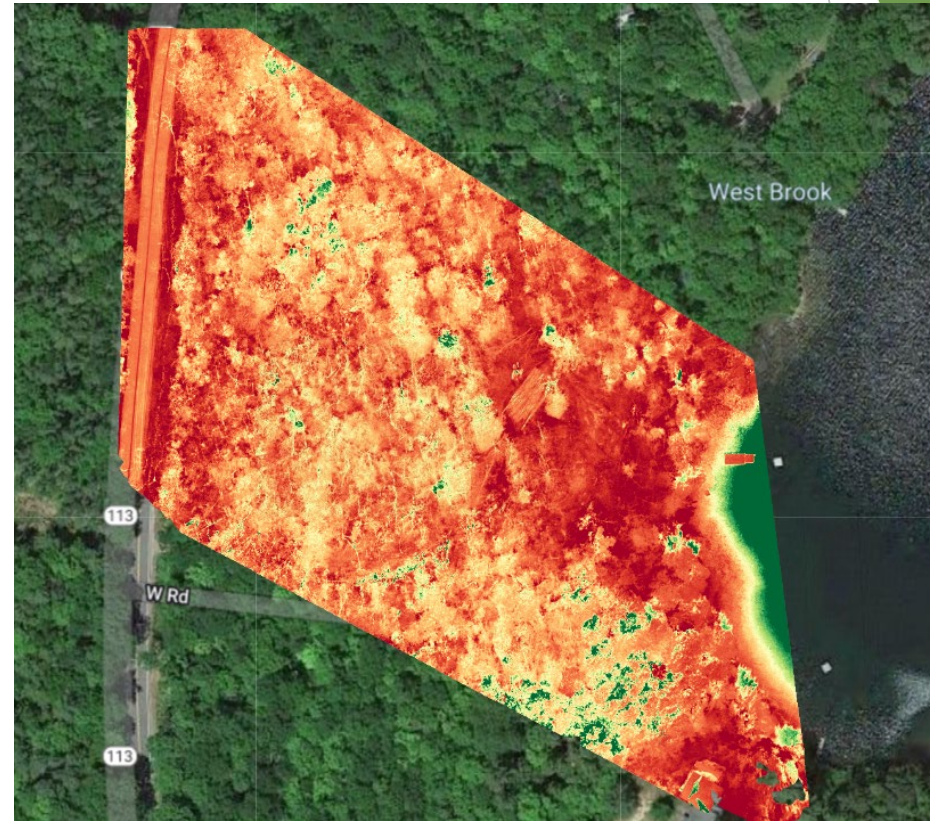
- Monitoring the health of your trees plants and turfgrasses is the best way to assure the resiliency of your landscape
- Diagnosing problems correctly allows for proper treatment, and eliminates the introduction of unneeded materials.



**University of
New Hampshire**
Cooperative Extension

Healthy and Resilient Landscapes

Monitoring for health

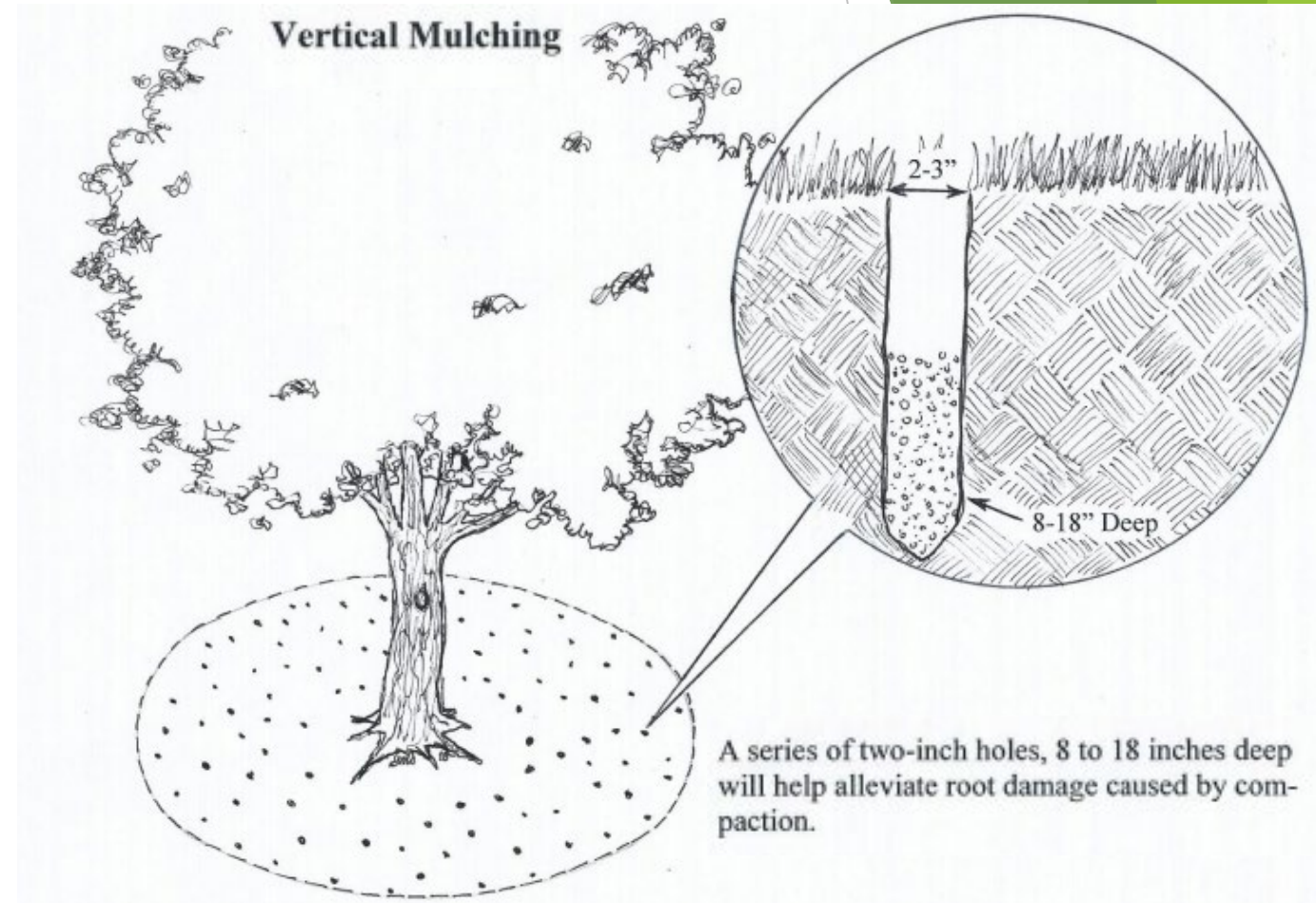


- Utilizing Drones can help property owners monitor large swaths or difficult to reach areas of land

Healthy and Resilient Landscapes

When health treatment is needed

- A correct diagnosis is the first, and by far most important step
- There are more methods than “Spray and Lay” which are often more effective and Lake-Friendly (such as vertical mulching)
- When introducing fertilizer, soil amendments, or chemicals, do so SPARINGLY. You can always reapply as needed
- Using a professional for plant health is highly recommended. Professional Applicators must be licensed by NH DES



Sustaining Your Landscape

Lake-Friendly Care to Keep Your Landscape Beautiful

- Ongoing, regular maintenance schedules are one of the best ways to reduce problems on your property
- Little efforts over time have less impact than large corrective measures
- It can be helpful to have a custom program, scheduled to the specific needs of your property with ongoing monitoring and adjustments as needed



Sustaining Your Landscape

Maintaining your turfgrasses

- Choose the right turfgrass for your application
- Don't fertilize blindly. Each property is unique, and yours may not require fertilization
- Dethatch, aerate, and overseed annually in the spring or autumn
- Water only when needed, and at the right time of day
- If you water, be on the lookout for active runoff, or evidence of runoff



Sustaining Your Landscape

Maintaining your hardscapes

- Permeable hardscapes need to be cleaned every 2-3 years to maintain permeability.
- If hardscape features are in disrepair, their drainage, slope, or other features may not be effective, creating runoff or erosion risks
- If you have your hardscapes cleaned, work with the vendor to find a solution that does not introduce cleaning chemicals into the lake



Sustaining Your Landscape

Maintaining your Ornamental Gardens

- Native and hearty species are typically the most lake-friendly choice for your gardens
- Drip irrigation or frequently watering while applying less water per instance is a better method to hydrate your plants
- Mulch helps beautify ornamental gardens while retaining moisture and discouraging weeds
- Mulch also helps absorb runoff and adds protects soil from erosion



Sustaining Your Landscape

Snow and Ice removal

- Have a plan. Where you store plowed or blown snow will influence where it melts and ends up.
- Utilize a NH Green SnowPro service provider. These providers are trained by NH DES to reduce the introduction of salt and chemical use
- Consider HEAT. Heated walkway and driveway costs have decreased substantially, and can now be 100% electric. In many cases, if you're installing new, adding heat may save you money over time
- Use sand over salt, but whatever you use, do so sparingly.



Getting a Lake-Friendly Landscape:

- Take the LakeSmart program survey it's an excellent resource and starting point
- Educate yourself, and seek help
- Use a systematic approach, prioritize your needs and solutions
- Understand all properties and instances are unique. “one size fit's all” solutions do not exist.
- Get started today

