



LAKES REGION CONSERVATION TRUST



LRCT Overview

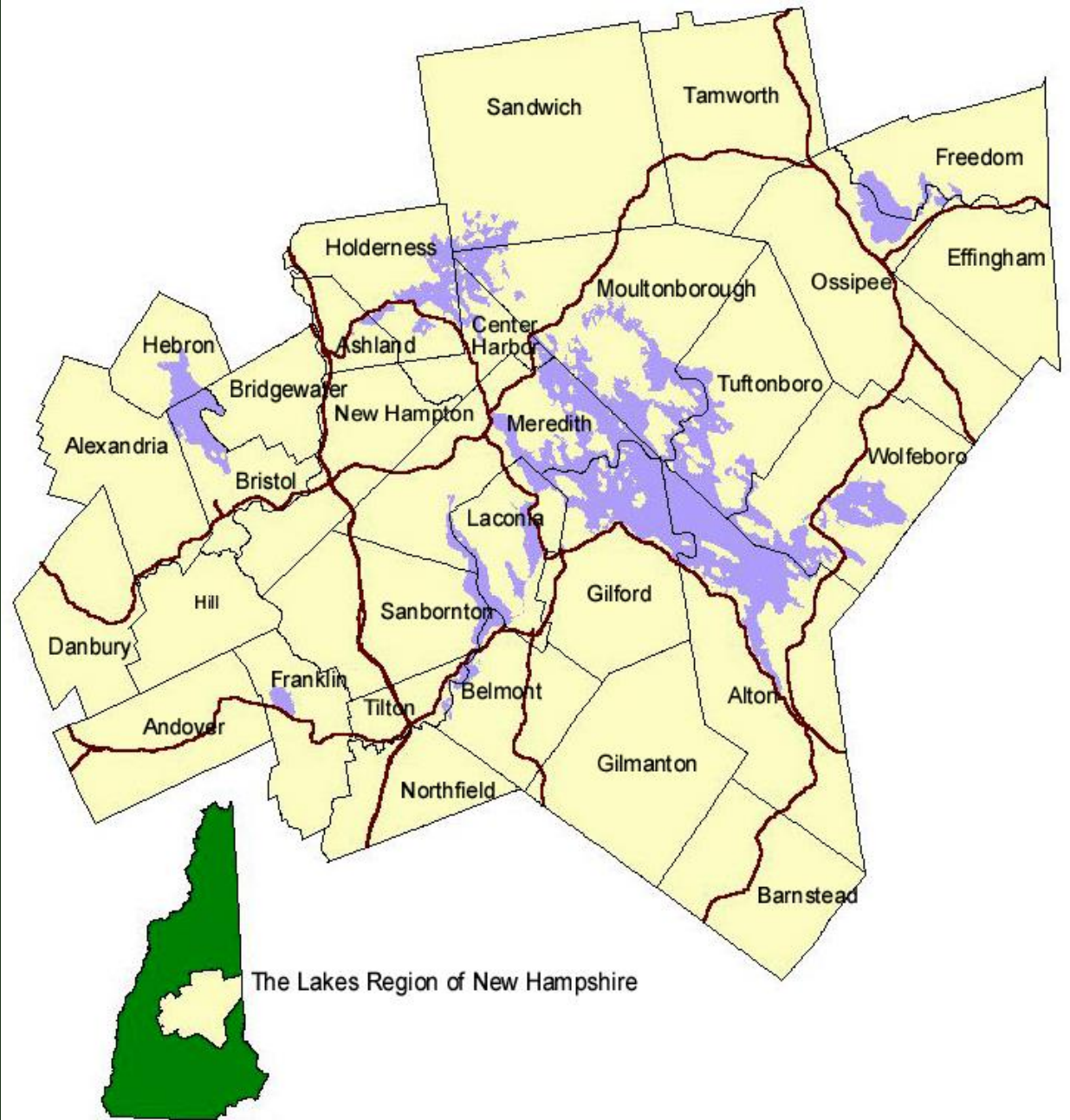
- Founded in 1979
- An independent, non-profit, member-supported organization dedicated to the permanent protection, stewardship, and respectful use of lands that define the character of the region and its quality of life.
- 30 towns -- “Lakes Region” as defined by LRPC



Lakes Region

30 towns

~1,200 sq. mi.





Land Conservation Priorities

- Shorelines
- Summits and ridgelines
- Recreational opportunities
- Wildlife habitat
- Ecologically significant lands
- Farmland
- Scenic landscapes and natural landmarks



Conservation Methods

- Ownership by LRCT
 - LRCT fully responsible
 - Public access
- Conservation Easement held by LRCT
 - Legal restrictions – LRCT responsible for monitoring, enforcement
 - No subdivision or development
 - Forest management and agriculture ordinarily allowed
 - Public access may or may not be allowed
- Acquisition through:
 - Purchase
 - Bargain purchase
 - Donation



Stonedam Island (1982)

- Lake Winnepesaukee, Meredith
- 141 acres
- Owned and conservation easement
- First major project





Rattlesnake Island (1982)

- Lake Winnepesaukee, Alton
- 104 acres
- Owned





Bearcamp Pond/River Properties (1990, 2006, 2010, 2011, 2014, 2015)

- Sandwich and Tamworth
- 582 acres (10 projects)
- Owned and conservation easements





Red Hill

(1996, 1997, 1999, 2000, 2002, 2005)

- Moultonborough, overlooking Winnepesaukee, Squam, and Center Sandwich
- 2,576 acres (6 projects)
- Owned





Red Hill





Roger W. Harris Natural Area (1997, 1998)

- Lake Wicwas, Meredith
- 61 acres (2 projects)
- Owned and conservation easement





Sewall Woods (1999, 2002, 2006, 2008)

- Wolfeboro
- 179 acres (4 projects)
- Owned





Center Harbor Woods (2010)

- Center Harbor and Moultonborough
- 224 acres
- Owned
- Partnership with SLCS and Town of Center Harbor





Newfound Lake/Cockermouth River (McLane) (2011)

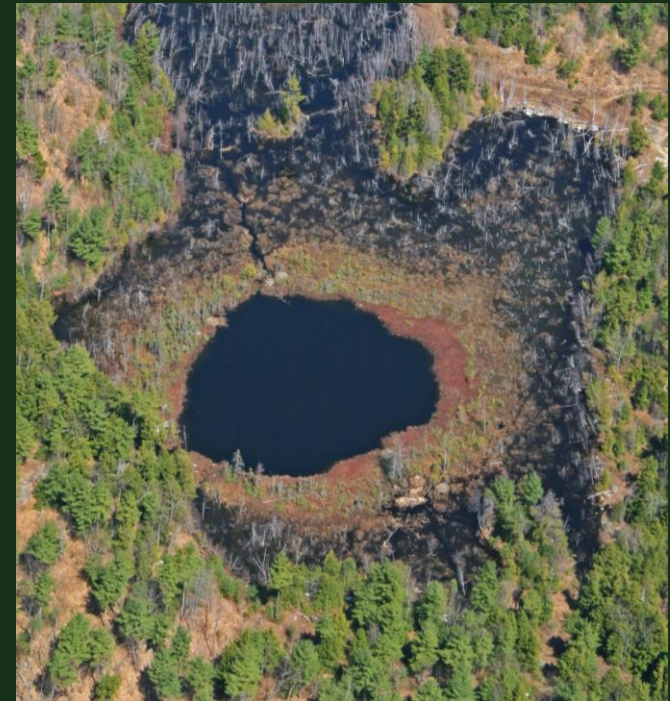
- Hebron
- 30 acres
- Conservation easement
- Partnership with Newfound Lake Region Association





Fogg Hill Property (2013, 2016)

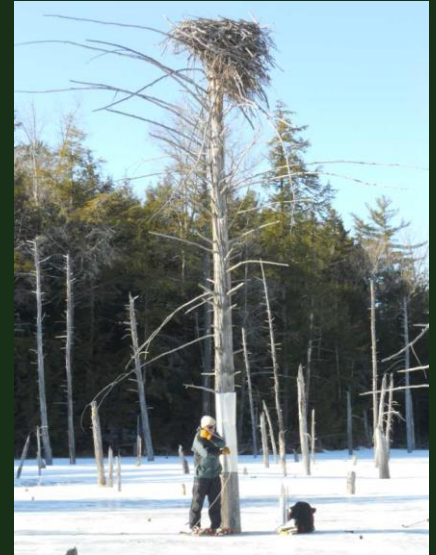
- Center Harbor
- 235 acres
- Owned
- Partnership with Town of Center Harbor





Suncook River Headwaters Properties (2009, 2015)

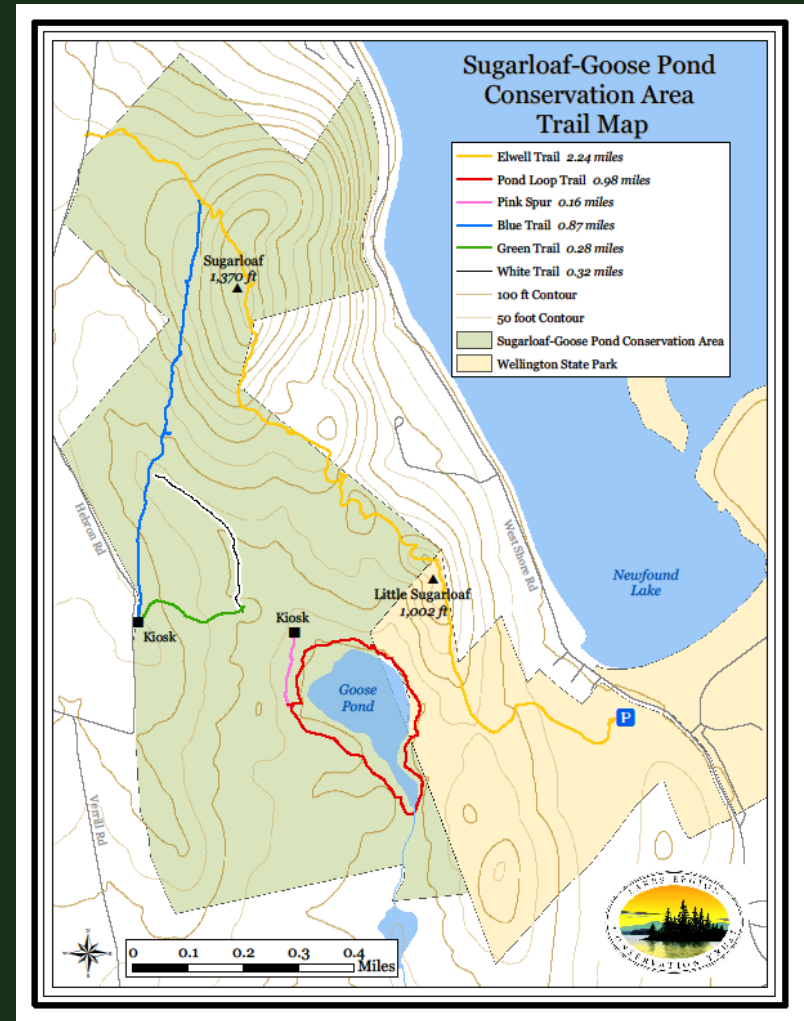
- Gilmanton
- 212 acres (2 projects)
- Owned and conservation easement





Sugarloaf Ridge -- Goose Pond (2014)

- Alexandria
- 398 acres
- Owned
- Partnership with Newfound Lake Region Association





Belknap Mountains (2014, 2017)

- Alton and Gilford
- 1,252 acres (5 projects)
- Owned and conservation easement
- Partnerships with SPNHF, BRCC, Towns of Alton and Gilford





Thank you





Emmons-Cohen (2015)

- Lake Wicwas, Meredith
- 2.23 acres; 500 feet of shoreline
- Owned





Marion (2016)

- Lake Wicwas, Meredith
- 15.10 acres; 3,600 feet of shoreline
- Owned





Smith (Turtle) Island (2016)

- Lake Wicwas, Meredith
- 0.23 acres; 525 feet of shoreline
- Owned





Harris (2017)

- Lake Wicwas, Meredith
- 14.83 acres; 550 feet of shoreline
- Conservation easement

