

Land Conservation in the Newfound Watershed

NH LAKES CONGRESS
MAY 31, 2019



NLRA LODESTONE

MISSION: Protect and Preserve the Newfound Watershed

Strategy:

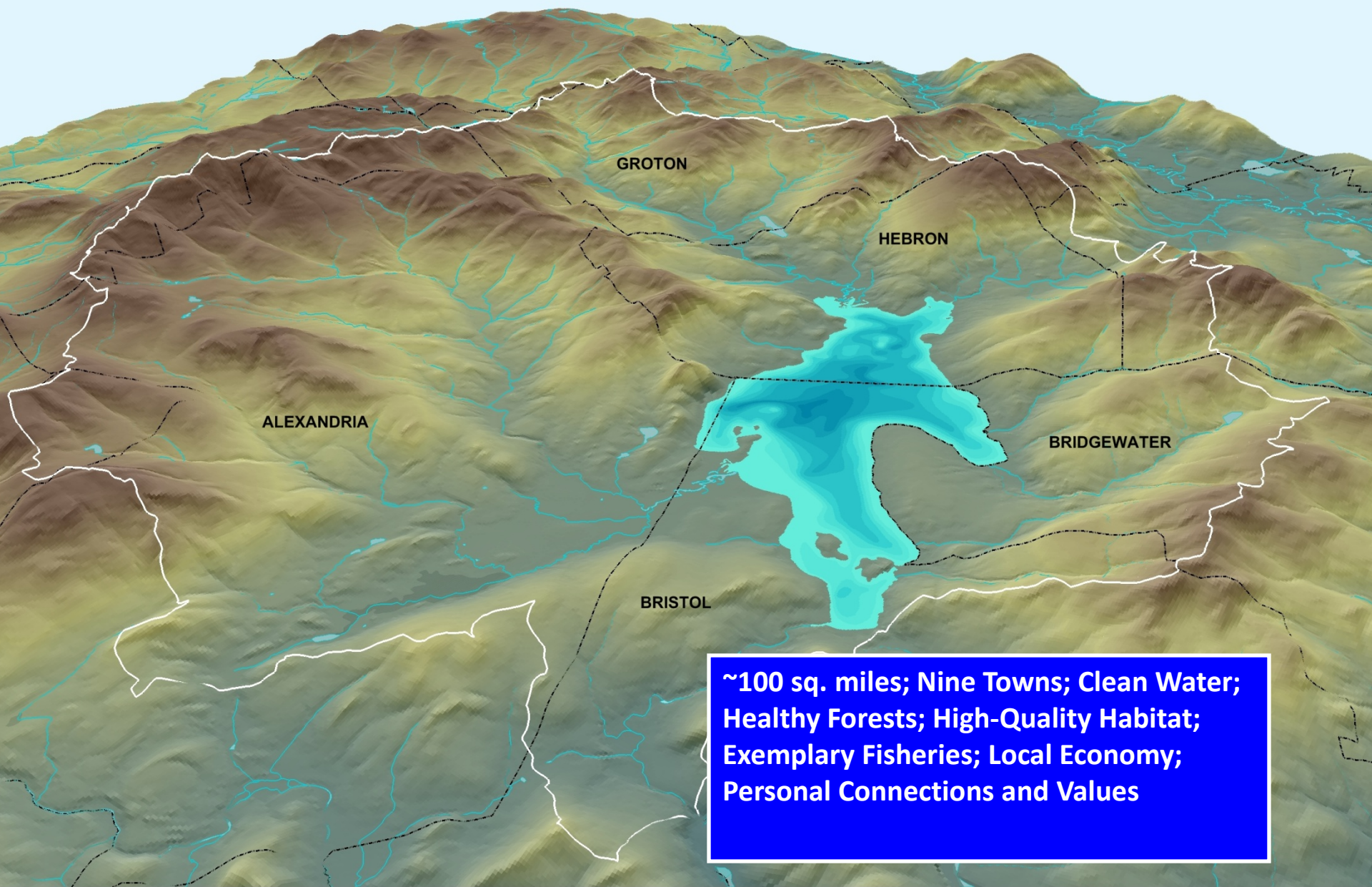
- Individual Property stewardship
- Municipal Land-use regulations
- **Land Conservation**

ABOUT THE NLRA

- Estbd. 1971, 501c(3) for environmental education and watershed protection
- Newfound Lake watershed = service area
- ~750 Members, incl. ~60 biz and 5 Towns
- Partners (State, Towns, Biz, Camps, Schools, NGOs, Associations, Families).

LAND CONSERVATION

- Land Conservation = Core Strategy
- Healthy Land = Clean Water
- Newfound Land Conservation Partnership (2009)
- John Gemmill Fund = \$750,000 for Transactions
- Current NLCP = Lakes Region Conservation Trust, Forest Society, The Nature Conservancy, NLRA
- ~10,000 acres conserved in ~10 Years



GROTON

HEBRON

ALEXANDRIA

BRIDGEWATER

BRISTOL

**~100 sq. miles; Nine Towns; Clean Water;
Healthy Forests; High-Quality Habitat;
Exemplary Fisheries; Local Economy;
Personal Connections and Values**















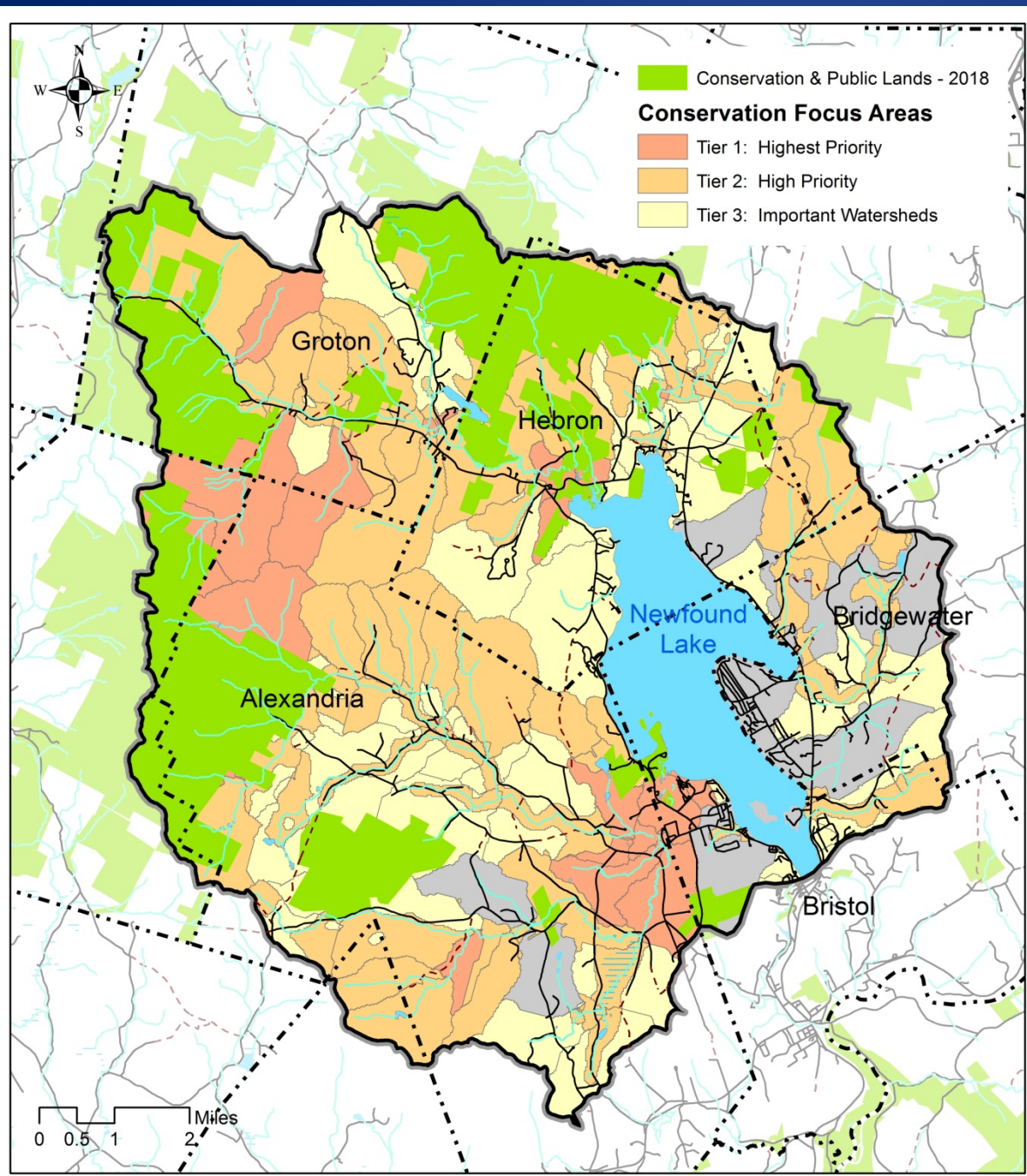
**Conserved Land
Baseline: Before Mount
Cardigan State Park and
AMC Cardigan Lodge
(1930s)**



Newfound Lake Watershed

0 2,300 4,600 9,200 Feet





Conserved Land 2019 (Green):

- Multiple Parcels
- Multiple Partners
- Multiple Benefits!

~17,000 ac. of 58,000 ac.
Watershed (29%)
Conserved!

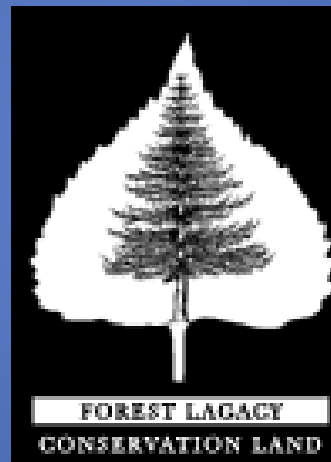


SOCIETY FOR THE
PROTECTION OF
NEW HAMPSHIRE
FORESTS

SINCE
1901



The Nature
Conservancy 
New Hampshire



Thank You!

