



Developing a WMP on a Small Budget, and then...

Joan Gorga

Gregg Lake WMP Committee

Antrim, NH



Gregg Lake

- Oligotrophic
- VLAP 23 years
- Impaired 17 years
- Algal blooms 2015
- WMP?

Antrim, NH

- Small rural town
- Moderate income
- “We want more for less!”
- Invested in Gregg Lake
 - Public beach park
 - Recreational programs
 - Boat launch
 - Kayak launch/dog swim
- Open GLA



WMP Core Group

⌘ Townies

- ⌘ Parks & Rec Chair—research biochemist
- ⌘ Water & Sewer Chair—hydrogeologist, USGS
- ⌘ Con Com Chair—geologist, DES
- ⌘ Treasurer—engineer
- ⌘ Town Clerk & Tax Collector

⌘ “Summah People, Summah Not”

- ⌘ Chesapeake Bay Foundation
- ⌘ MS in Natural Resources and the Environment
- ⌘ Certified GIS Professional
- ⌘ Land conservationists



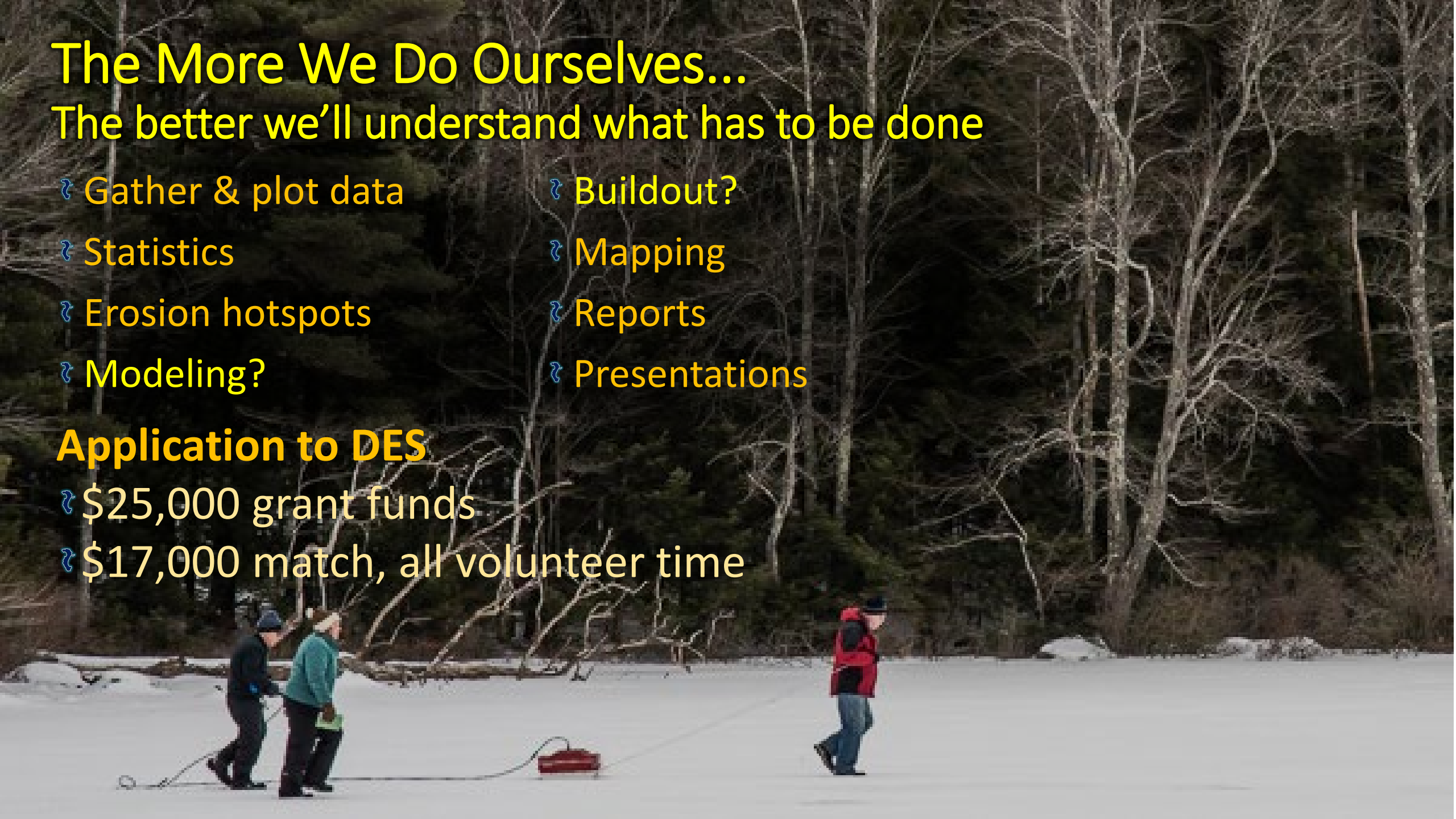
The More We Do Ourselves...

The better we'll understand what has to be done

- ⌘ Gather & plot data
- ⌘ Statistics
- ⌘ Erosion hotspots
- ⌘ Modeling?
- ⌘ Buildout?
- ⌘ Mapping
- ⌘ Reports
- ⌘ Presentations

Application to DES

- ⌘ \$25,000 grant funds
- ⌘ \$17,000 match, all volunteer time



Would Any Consultants Bid?

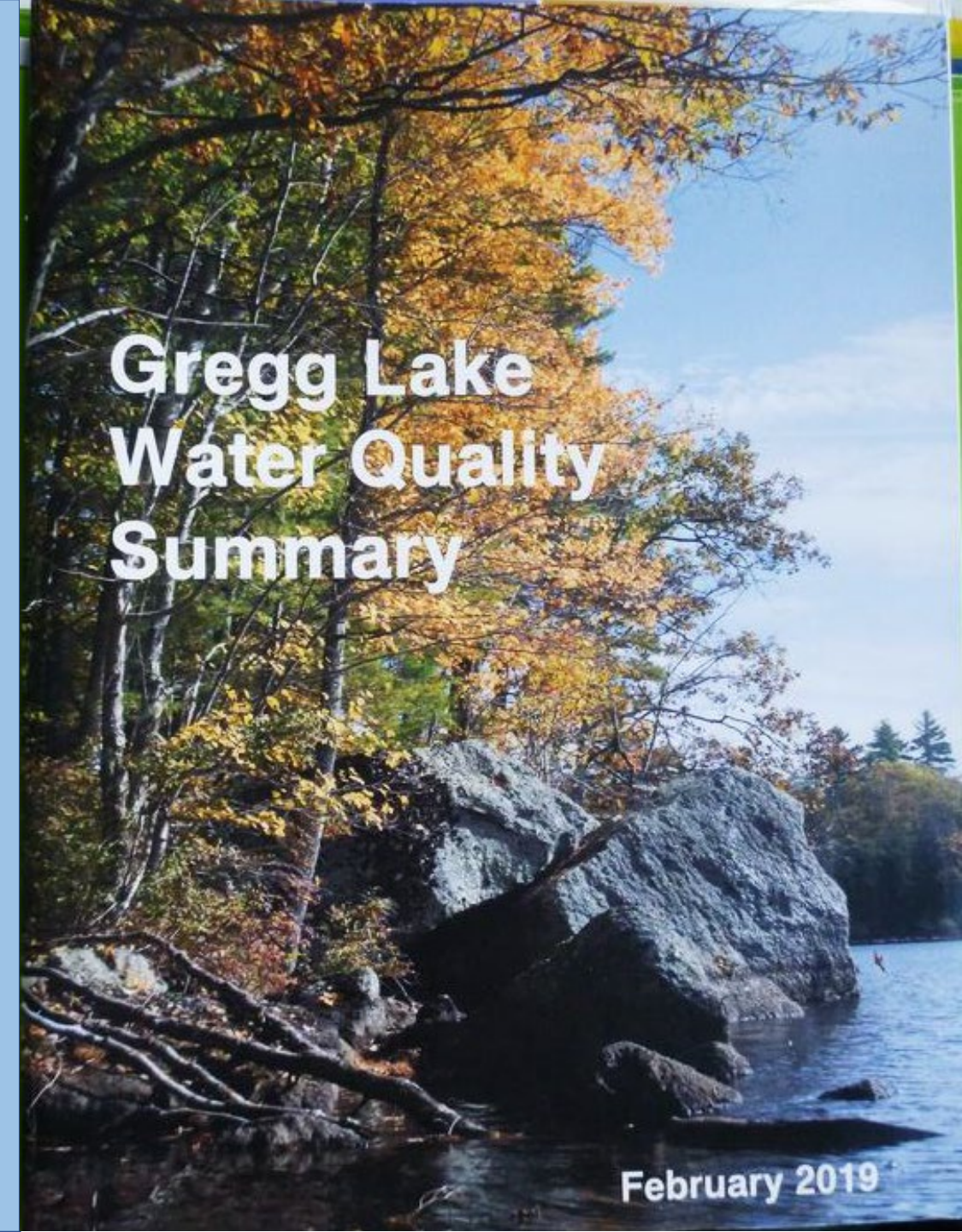
- \$25,000 Grant Funds
- \$23,200 for Consultant (per DES)

- Two responses
- Contract with FB Environmental



WQ Analysis

- ⌚ Evaluated data
- ⌚ 70-Page summary
- ⌚ Printed copies
- ⌚ Posted online
- ⌚ Explained...



Gregg Lake Water Quality Summary

February 2019

Reached out to Stakeholders...

- ⌘ Road Agent
- ⌘ Fishers, boaters
- ⌘ Lake residents
- ⌘ Town residents



Meetings, Posters, Articles

- FAQS, summaries
- Website
- Lake associations
- Town forums
- Festivals
- Town newsletter



A group of people, including adults and teenagers, are on a wooden bridge over a pond. They are using long-handled nets to collect samples from the water. The bridge has a wooden railing and is surrounded by lush green vegetation. The scene is outdoors, with trees and bushes in the background.

Bringing In Youth

Teen Center Pond Science Camps
School Science Projects

Successes? Yes!

- ⌘ Septic survey—75% response
- ⌘ GLA buy-in
- ⌘ Lake users

Challenges? Many!

- ⌘ Learning the process
- ⌘ Planning Board
- ⌘ Selectboard
 - ⌘ Delays, delays, delays
- ⌘ WMP finished March 2020



Gregg Lake:

Many minor pollution sources

WQ goal requires progress at many levels:

- Town property
- Private property
- Ordinances
- Conservation
- Boating regulations



Have we achieved anything?

Erosion Hotspots under Town Jurisdiction

#1 BC Rd—retention basin built ✓

#2 GL Rd undercut

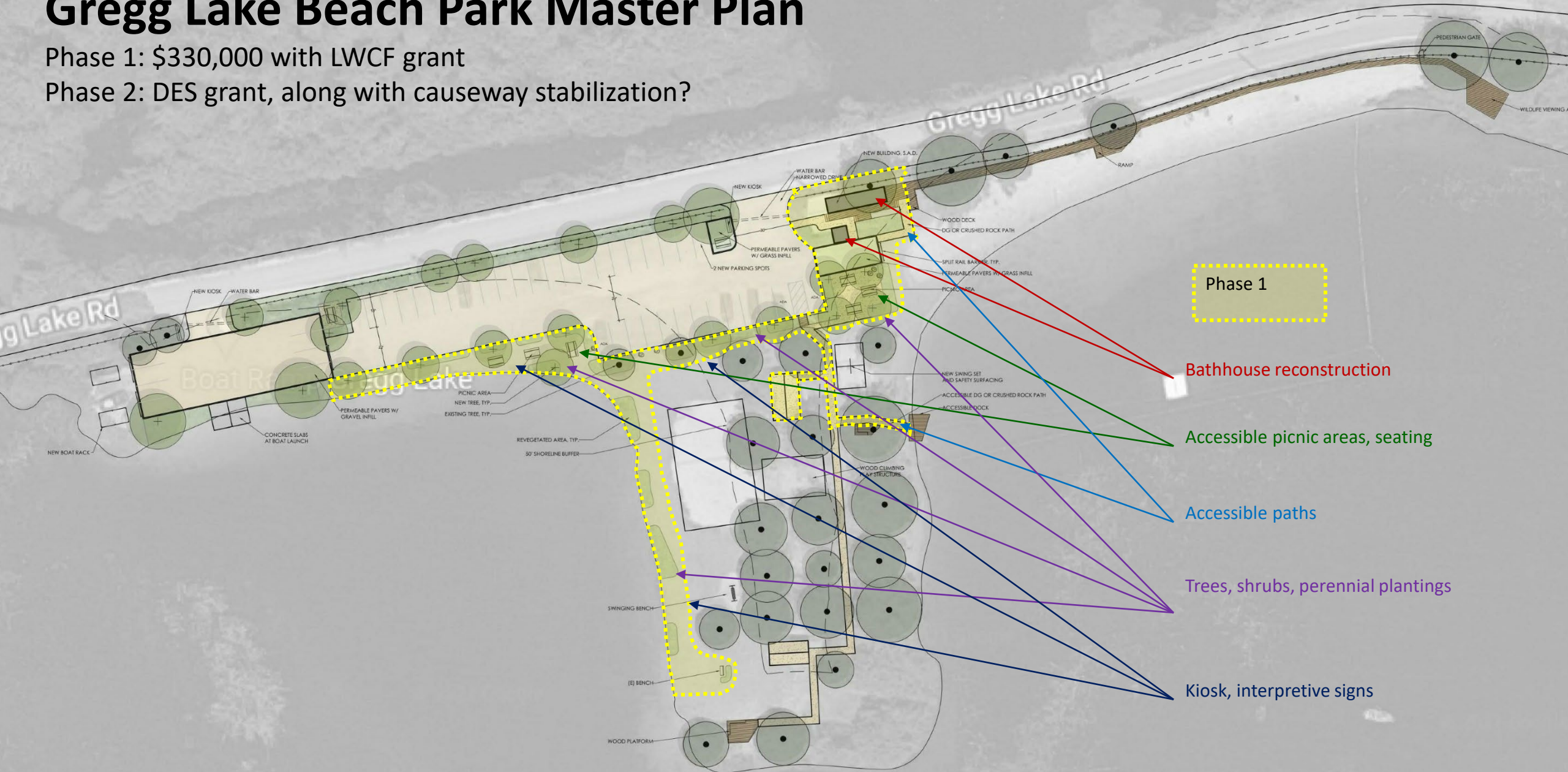
#3 GL Rd Causeway shoulder

#6 Public beach—LWCF grant



Gregg Lake Beach Park Master Plan

Phase 1: \$330,000 with LWCF grant
Phase 2: DES grant, along with causeway stabilization?



Erosion Hotspots on Private Properties

- #4 Private beach sand X3
- #5 WBP private beach—road vs beach erosion
- DES Soak Up the Rain
 - 10 homes visited 2021
 - Another 10 scheduled in 2022
- Septics—4 systems replaced
- 2 Conservation easements

Ordinances and Regulations

Planning Board “clarifying” shoreland protection ordinances



Future Challenges?

- Lower horsepower limit
- Increase no-wake zone

Gregg Lake WMP

- We did it! (with help)
- We know our lake and watershed well
- Convincing others is progressing

