

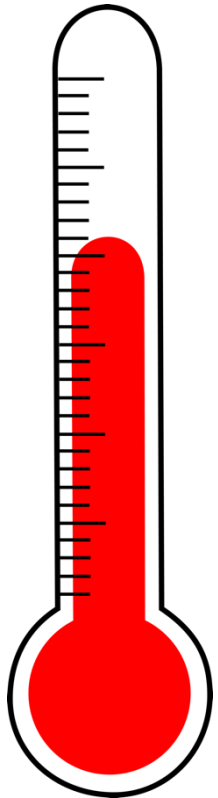
# Protecting New Hampshire's Wildlife in a Changing Climate

Haley Andreozzi | [Haley.Andreozzi@unh.edu](mailto:Haley.Andreozzi@unh.edu)

Lisa Wise | [Lisa.Wise@unh.edu](mailto:Lisa.Wise@unh.edu)



# What does climate change look like in New Hampshire?



---

Warmer temperatures, especially in winter

---

Seasonal shifts in precipitation

---

Reduced snowpack and ice cover

---

Longer frost-free season

---

More extreme precipitation

---

More intense storms

---

Rising seas

---









Extreme storms  
and flooding





Bri Benvenuti /USFWS

# Rising sea levels







Gabe Roxby

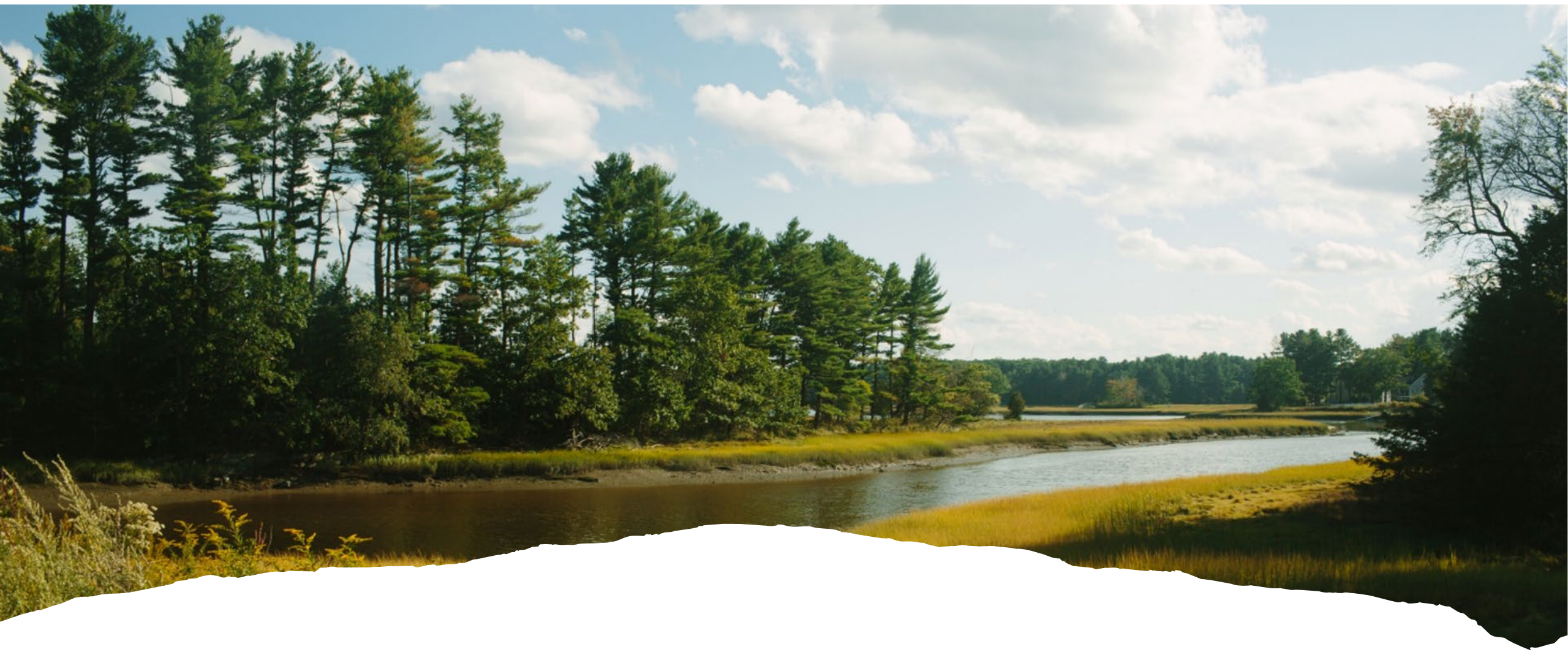
# Invasive species and pests





# Snow depth and winter ice





**Loss of thermal habitat**

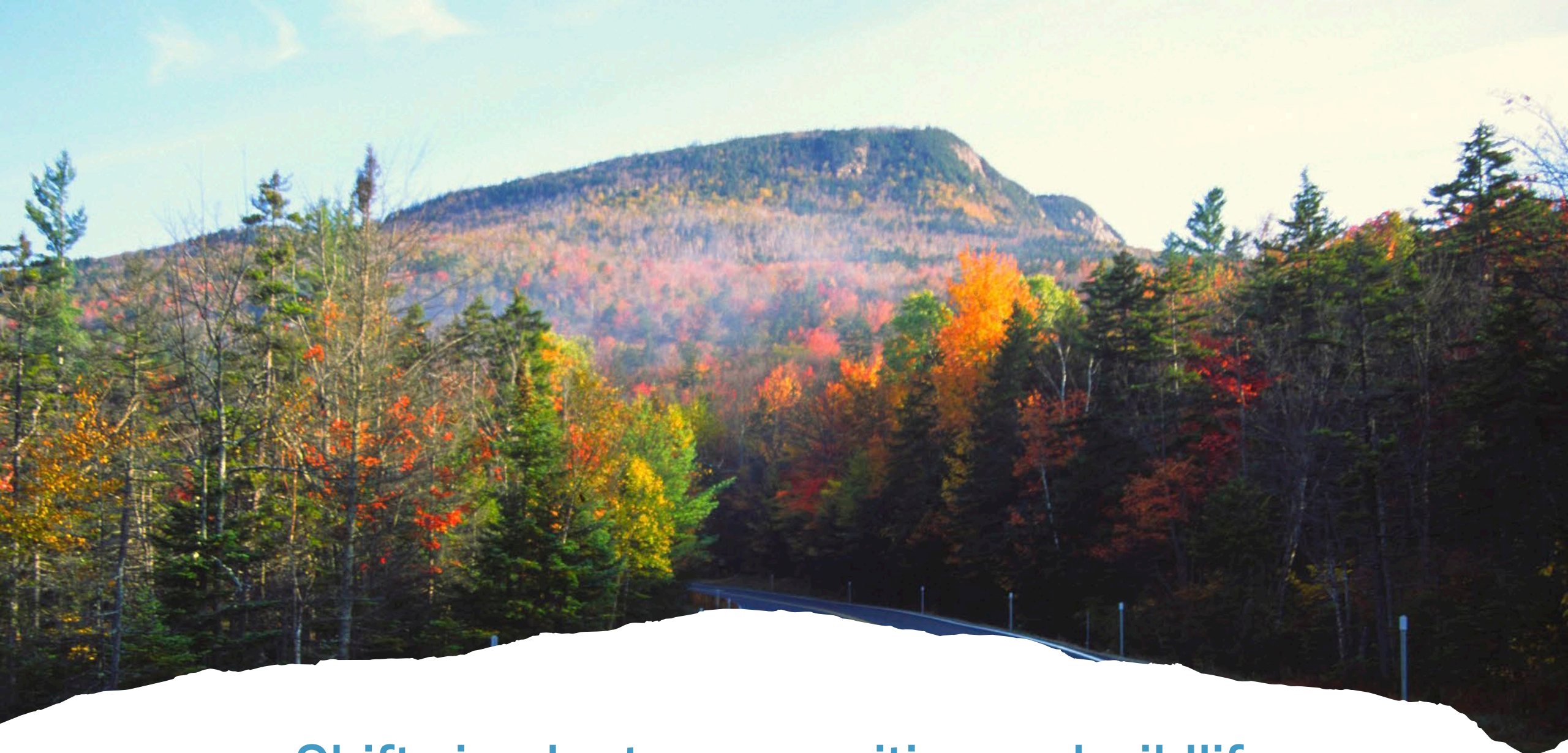




NHDES

# Impacts on lakes



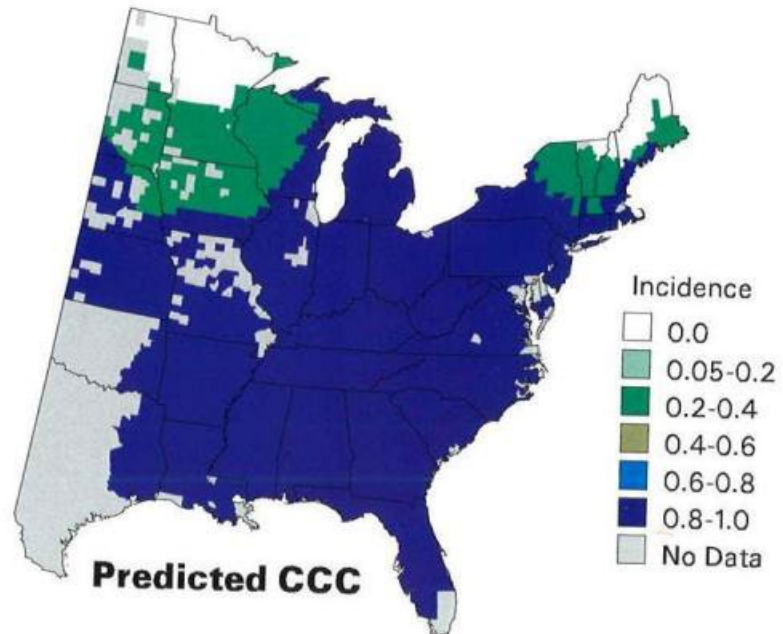
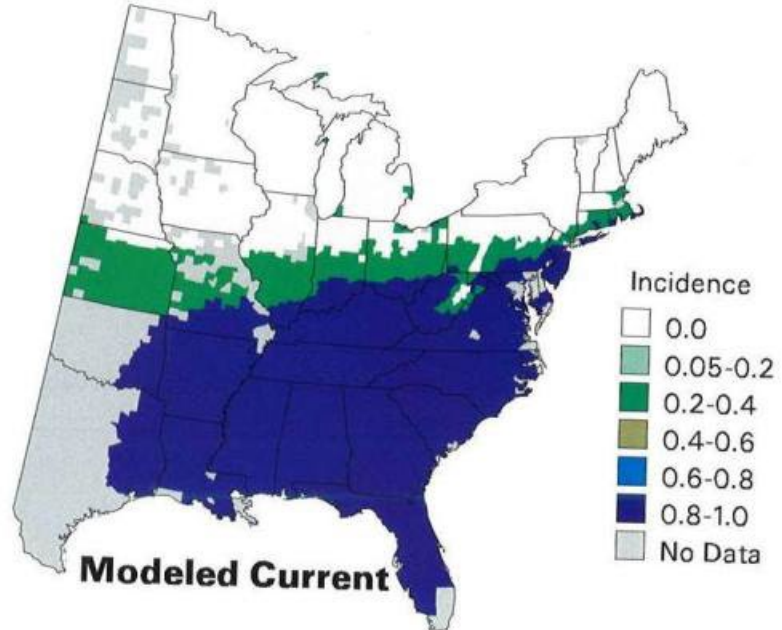
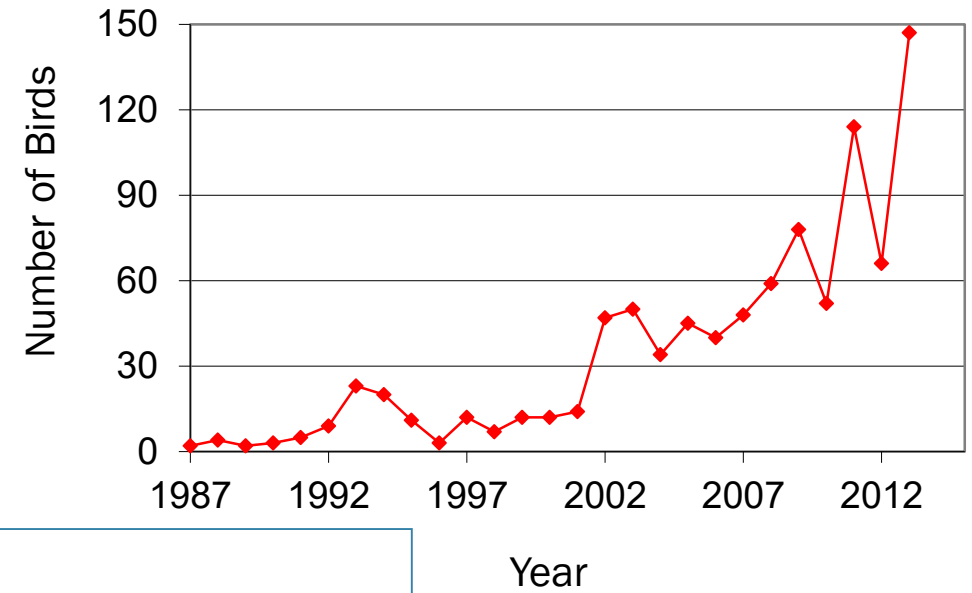


Shifts in plant communities and wildlife





Carolina Wren on BWBS: 1987-2013











USFWS



Tim Lenz/USFWS

# Phenology







# Moose



## Moose on the Decline in N.H.

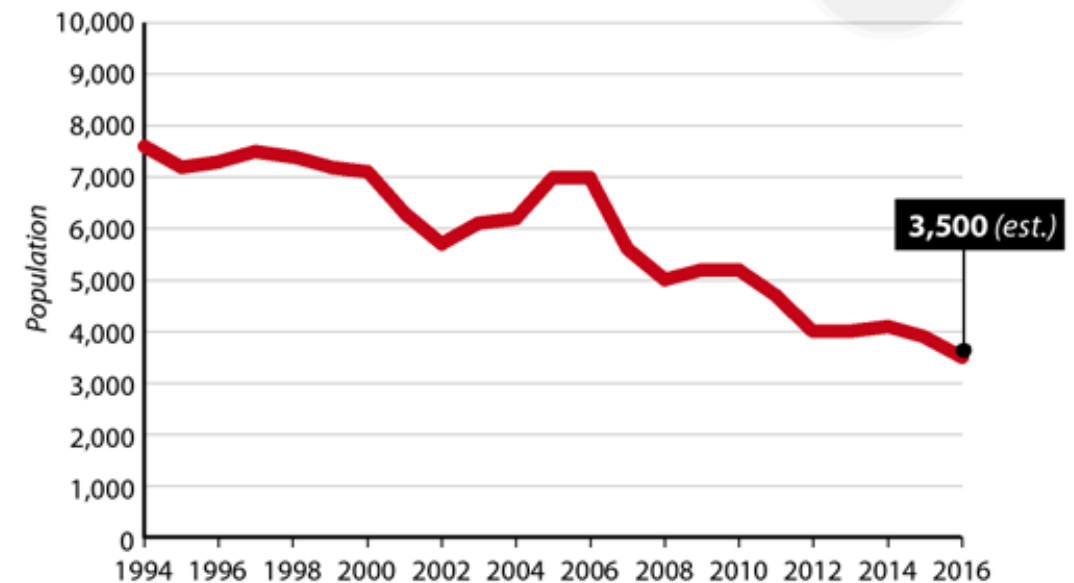
The estimated moose population in New Hampshire has decreased by more than 50 percent since the mid-1990s. State biologists believe a spreading tick population, bolstered by shorter winters, is the main culprit.



**Moose**  
*Alces alces*

### NEW HAMPSHIRE MOOSE POPULATION

Estimated, 1994-2016



SOURCE: New Hampshire Fish & Game Dept.

PAUL HORN / InsideClimate News



# Brook trout





# Pollinators





An aerial photograph of a lush, green wetland landscape. A winding, light-colored river or stream flows through the dense vegetation, which appears to be a mix of grasses and low-lying plants. The water in the river is a pale, milky grey, suggesting sediment or silt. The surrounding land is covered in vibrant green grass and patches of darker, more dense foliage. The overall scene depicts a healthy, natural ecosystem.

Plants and animals  
must adapt or relocate





Take Action





# Climate Resilience

The ability of a species, habitat, or ecosystem to adjust to environmental disturbance caused by climate change by evolving, taking advantage of local opportunities, or relocating to more suitable habitat



Conserve large  
habitat blocks





# Protect wildlife corridors





# Consider climate in habitat management







**Protect and restore riparian buffers**





**Restore aquatic connectivity**



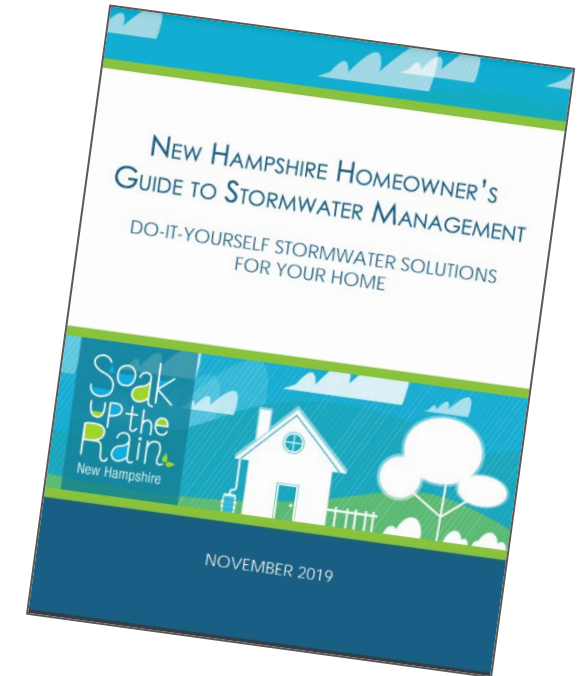
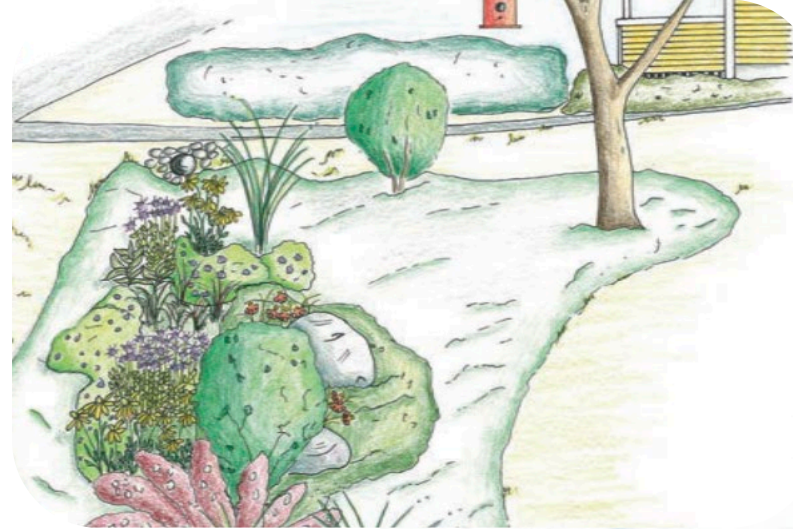
# Reduce stormwater runoff



Runoff erodes a small rill and carries sediment to a nearby lake.



Roof runoff directed onto this driveway flows into the street and may be sending pollutants to a nearby waterbody.







Support pollinator  
habitat



# Encourage wildlife protections in renewable energy projects

---

- Encourage siting on already disturbed/developed lands
- Avoid/minimize impacts to sensitive wildlife habitats
- Allow for animal passage
- Protect water quality and avoid erosion
- Restore/maintain native vegetation





# Resources



[www.TakingActionForWildlife.org/resources/climate-change-resources](http://www.TakingActionForWildlife.org/resources/climate-change-resources)





Questions?



# Discussion

- What do you see as the biggest challenge related to climate change?
- Have you or your town/community taken any actions related to climate change and wildlife?
- If not, which of these actions seem feasible?
- What additional resources or assistance would be useful in working on climate change?